



NEIGHBORHOOD

MILWAUKEE JUNCTION

LOCATION

SW CORNER OF ST ANTOINE
AND E MILWAUKEE

SPACE TYPE

WAREHOUSE

This 8,216-square-foot industrial warehouse is located in Detroit's Milwaukee Junction, one of the city's most dynamic commercial and cultural districts. The building includes 6,300 square feet on the ground level and 1,916 square feet in the mezzanine, featuring a move-in-ready interior and a grade-level loading dock. Offering unmatched access to a vibrant mix of dining, retail, and creative businesses, including Chroma, Freya, Vault of Midnight, Sepia Coffee, TechTown, The Fisher Building, and more.

ASKING RATE

\$8/SF Modified Gross

ADDRESS

575 E Milwaukee, Detroit, MI 48202

NEIGHBORS

Oak & Reel, Freya, Chroma, Hot Bones, Vault of Midnight, Sepia Coffee, Kiesling, Milwaukee Caffe, Shinola Headquarters, College for Creative Studies (CCS), City Year, Tangent Gallery, TechTown, Time Will Tell, Baobab Fare, Supino Pizzeria, Yum Village, Huntington Bank, The Fisher Building, Wayne State University, and the QLINE station.

SIZE

8,216 Square feet

GRADE LEVEL DOORS

1

ZONING

SD-2

ZONING DESCRIPTION

This district is designed to encourage a complementary mixture of more intensive pedestrian- and transit-oriented uses that may be compatible with a neighborhood center or with a location along major or secondary thoroughfares. Parking requirements are reduced in certain circumstances to promote use of transit and non-motorized transportation; shared parking and a district approach to parking are encouraged to lessen demand for off-street parking spaces.

575

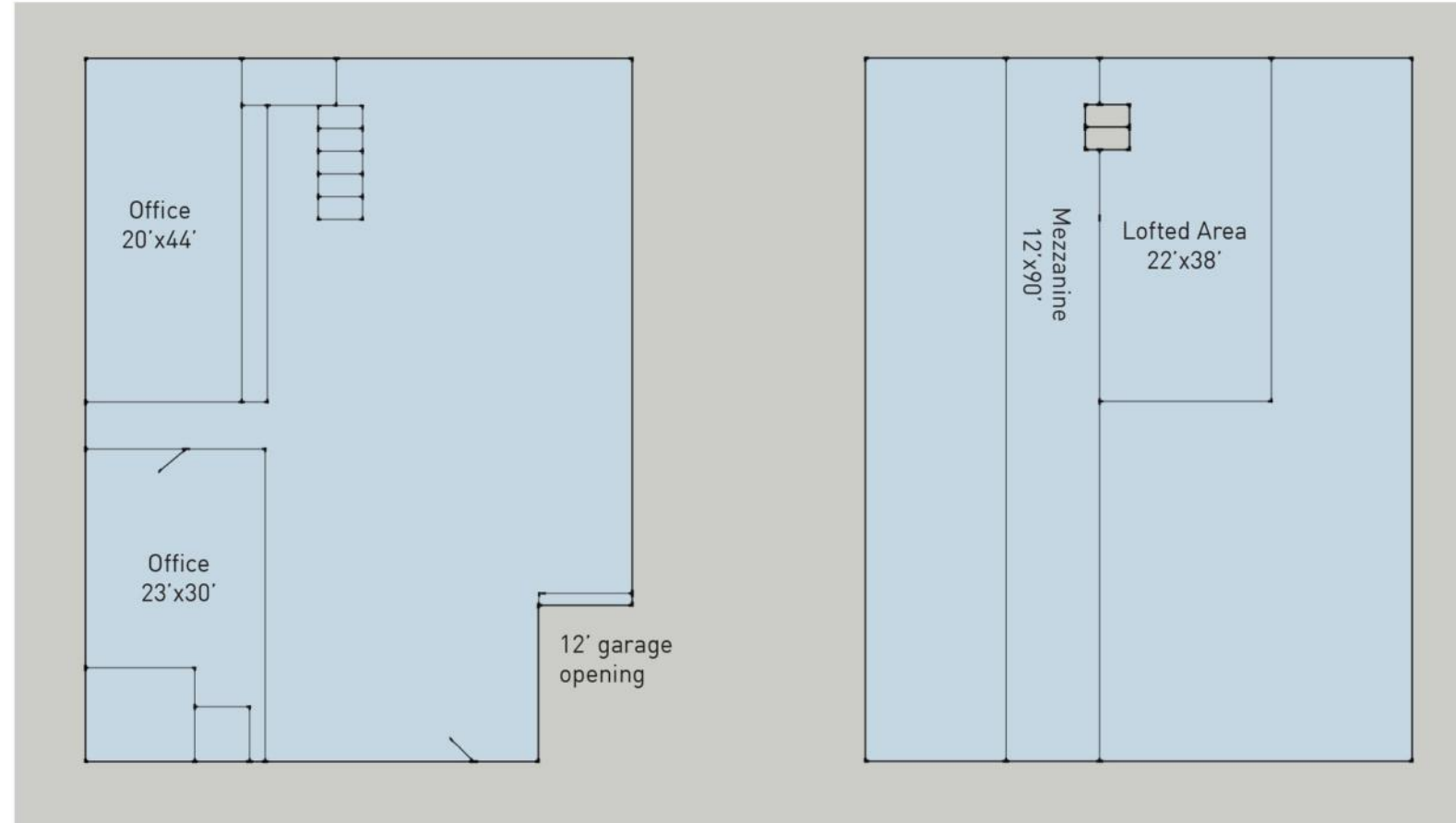
E MILWAUKEE

Floor Plans

FEATURES

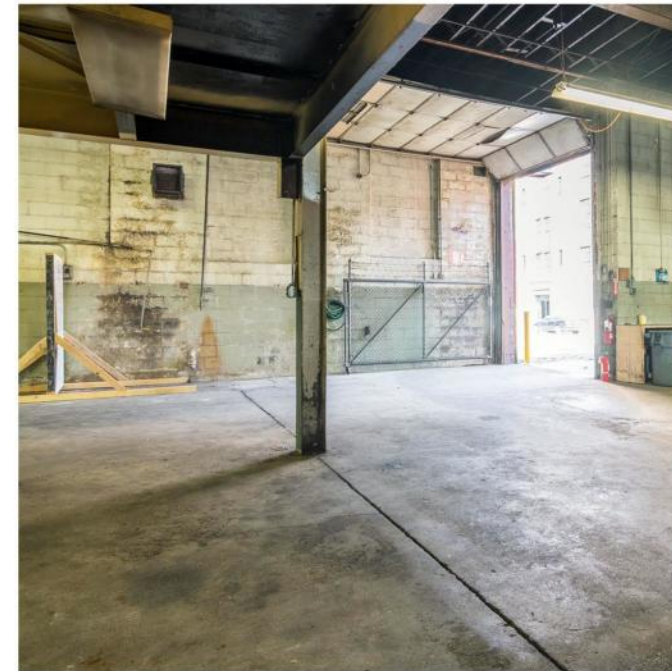
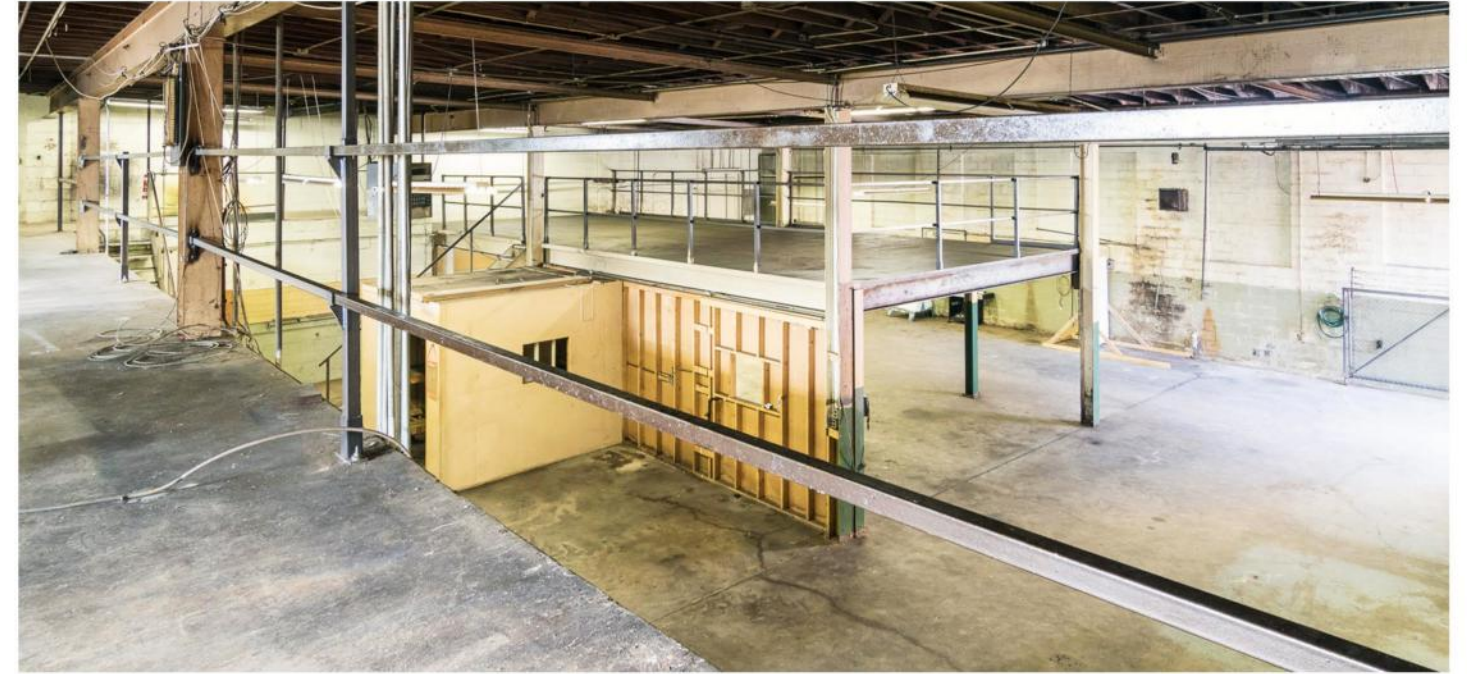
Move-In-Ready Interior 8,216 SF with a finished first floor and mezzanine, suitable for immediate occupancy or adaptive reuse.

Walkable to top destinations including Chroma, Freya, Vault of Midnight, Sepia Coffee, TechTown, The Fisher Building, and more in one of Detroit's most dynamic commercial and cultural districts.



FIRST FLOOR
70'X90'

SECOND FLOOR
70'X90'





575
E Milwaukee

8,216 SF
Available

O'Connor Real Estate

575 E MILWAUKEE, DETROIT, MI 48202

NEW CENTER

Less than 3 miles north of the central business district, New Center is the geographic heart of Detroit where neighborhoods meet the urban core. New Center sprang to life in the 1920s as a second city where auto companies could be closer to manufacturing facilities in neighboring Milwaukee Junction. The neighborhood's signature historic buildings continue to drive economic activity while industrial facilities are being reimagined as creative mixed-use spaces for residential and retail use.

O'Connor Real Estate



AREA DEVELOPMENTS



New Henry Ford Hospital

Henry Ford Health is driving a \$2.5 billion investment in New Center anchored by a new \$1.8 billion hospital at the M-10 Freeway and Grand Boulevard. The new hospital will be more than one million square feet and nearly as tall as the 489-foot Fisher Building. Construction is planned to begin in 2024 and conclude in 2029.



One Ford Place Lofts

As part of the \$2.5 billion partner investment, Detroit Pistons owner Tom Gores plans to redevelop the health system's 610,000-square-foot headquarters located across from the Pistons Performance Center into housing and construct new mixed-use residential, retail, parking and green spaces on an adjacent surface parking lot.



Michigan State University Research Center

The 30-year Henry Ford Health (HFH) and Michigan State University partnership includes a new, 300,000- to 400,000-square-foot, cutting-edge medical research facility to be built on the HFH campus near the Detroit Pistons Performance Center. The project is expected to break ground in 2024 and open in 2027.

AREA DEVELOPMENTS



Fisher Body Plant No. 21

The conversion of the long-vacant Fisher Body 21 Plant represents one of the most ambitious redevelopments of an abandoned Detroit building in recent times. The adaptive reuse of the 600,000-square-foot plant into 435 apartments and commercial spaces is expected to start in 2024.



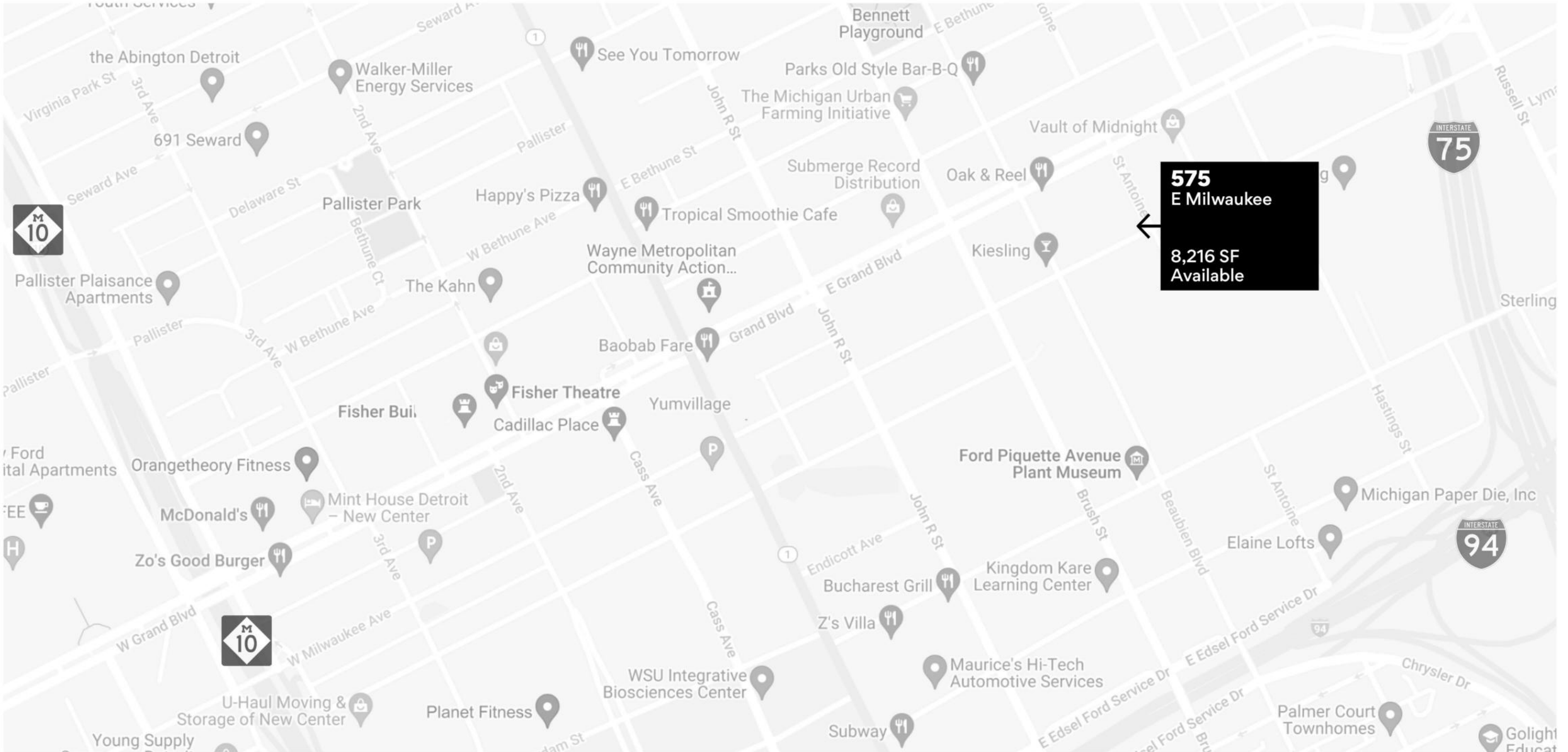
Piquette Flats

A 108,000-square-foot historic industrial building in Milwaukee Junction is being converted into 161 affordable apartments, representing one of the largest new affordable housing developments in Detroit. The \$38.2 million project is scheduled to open in 2024 with apartments priced between 60%-120% of the area median income.



Detroit Design District

A mixed-use hub for artists, creators and other design-driven businesses is underway on E. Grand Boulevard in Milwaukee Junction. Phase 1 created 15,000 square feet of retail space, lofts and outdoor event space. Phase 2 will add an additional 60,000 square feet to the district through the adaptive reuse of an adjacent industrial building.



A TRUSTED AND RESPECTED
MEMBER OF THE COMMUNITY,
O'CONNOR REAL ESTATE
BRINGS 20 YEARS OF
EXPERIENCE AND EXPERTISE
TO THE COMMERCIAL OFFICE
AND RETAIL MARKET.

For more information about 575 E Milwaukee,
please contact O'Connor Real Estate

Vincent Mazzola
+ 313 704 2678
vincent@oconnordetroit.com

O'Connor Real Estate

The information used in this marketing material was taken from sources believed to be reliable. O'Connor Real Estate makes no representation, warranty, or endorsement made as to the accuracy, reliability, adequacy, or completeness of any information or analysis contained herein and disclaims any and all liability that may be based on such information, errors therein or omissions therefrom. You and your advisors should conduct a careful and independent investigation of the property to determine your satisfaction with the suitability of the property for your needs.