



NEIGHBORHOOD

BRUSH PARK

LOCATION

BETWEEN ELIOT & ERSKINE  
WOODWARD & JOHN R

SPACE TYPE

RETAIL



SOMA Detroit offers modern retail spaces on the border of Brush Park and Midtown, located less than a block off Woodward Avenue. The property includes tenants like BASK Detroit Spa and Health Club, Anna's Café, and Goodpluck: Local Farm Groceries. The neighborhood features a mix of residential units and national retail brands—with SOMA Detroit situated just a few blocks from Detroit’s arena district and cultural center. Ample public parking is available in the attached garage, making it convenient for visitors. Available suites range from 1,300 to 3,741 square feet.

ASKING RENT

**\$30/SF NNN**

NEIGHBORS

The Scott, For the Love of Sugar, Whole Foods, Bar Pigalle, The Eagle, Sugaring NYC, Bakersfield, Grey Ghost, Second Best, Empire Kitchen and Cocktails, The Historic Bonstelle Theatre, and MSU Community Music School.

COMMENTS

Marriott to restore The Bonstelle Theatre and develop an AC Hotel on Woodward sharing an activated alley with SOMA Detroit.

SIZE

**1,300 - 3,484 RSF**

FRONTAGE

**54' on Eliot  
45' on Erskine**

CEILING HEIGHTS

**14'**

# SOMA

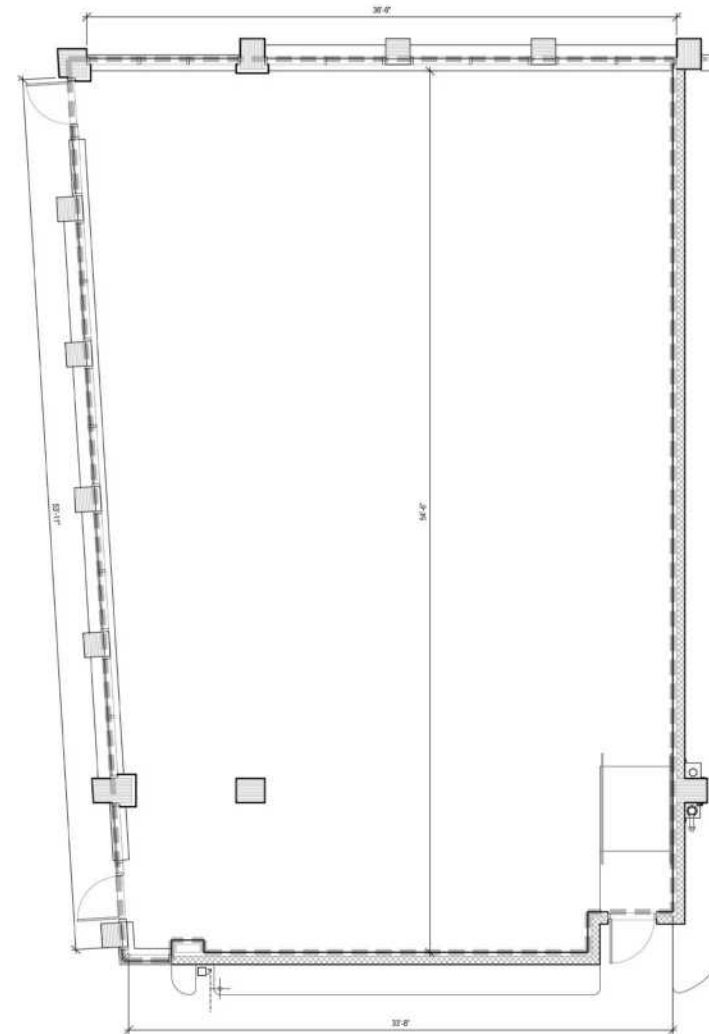
## ELIOT & ERSKINE RETAIL

Brush Park

### FEATURES

- 14' Ceiling Heights
- Up to 3,483 Square Feet of Modern Retail
- Suited for Restaurant Use
- Public Parking Garage

**ELIOT RETAIL**  
1,300 - 3,483 SF AVAILABLE



**ERSKINE RETAIL**  
1,300 SF AVAILABLE









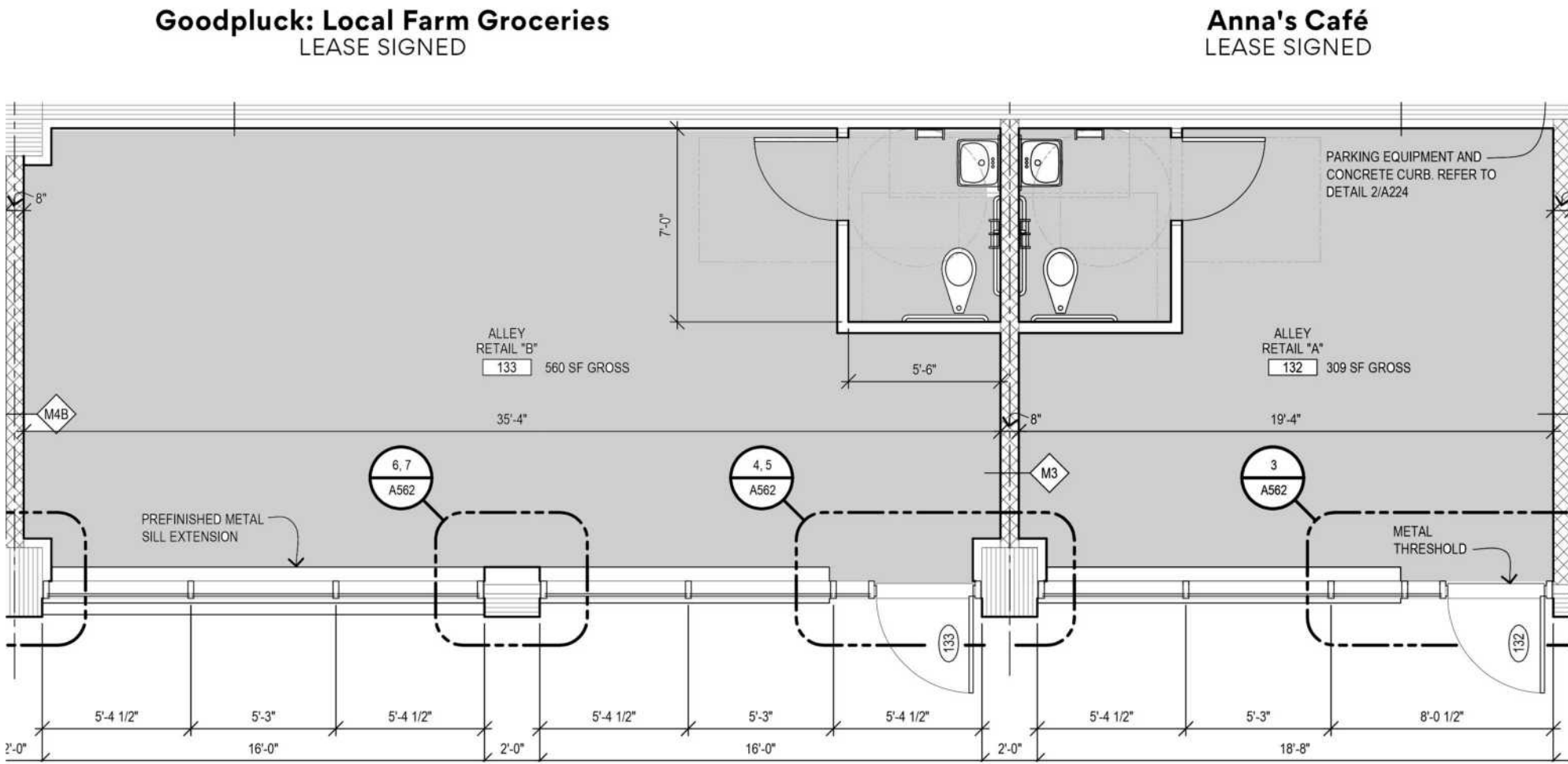
# SOMA

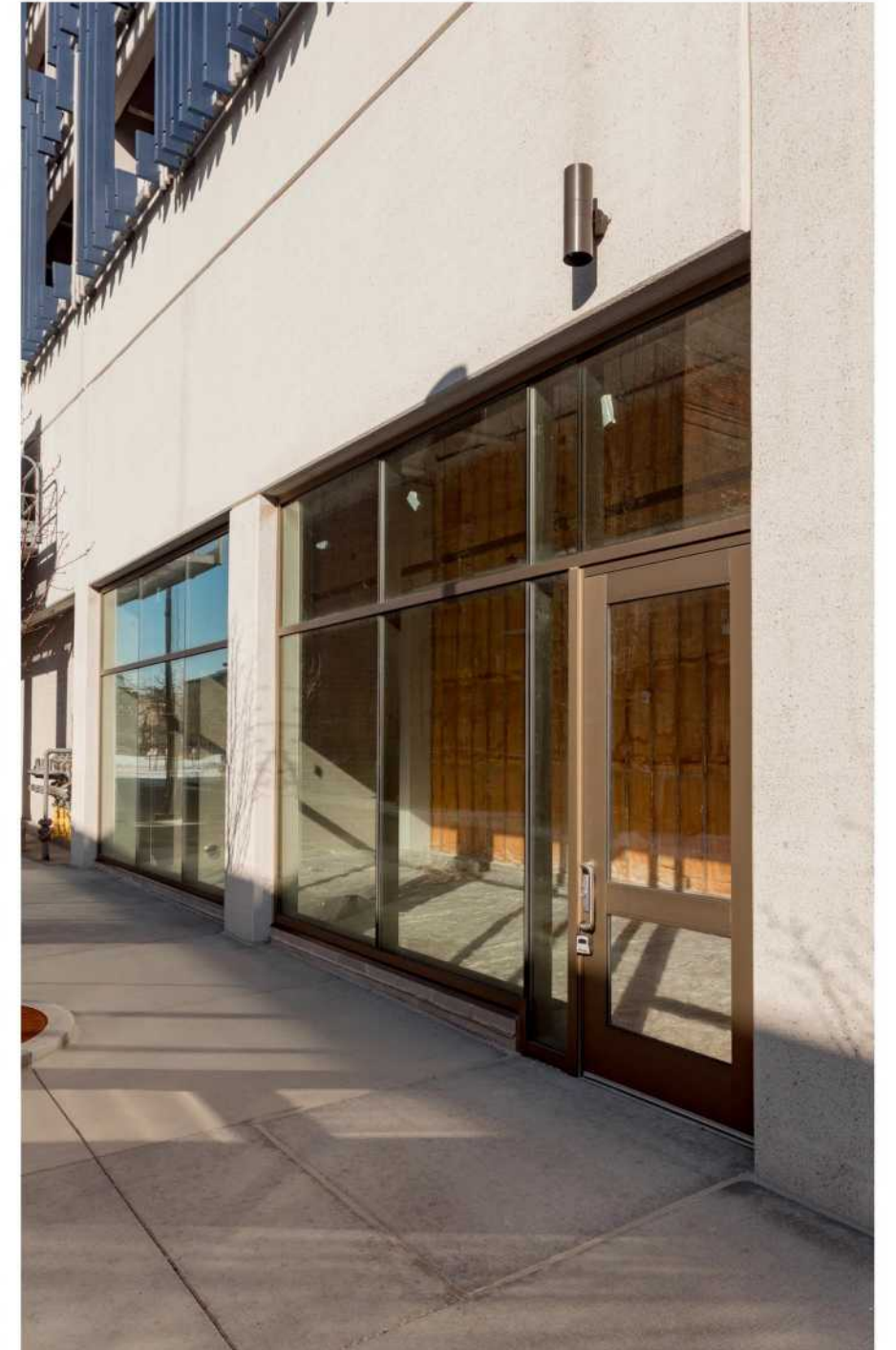
## ALLEY RETAIL

Brush Park

### FEATURES

- 14' Ceiling Heights
- Floor to Ceiling Windows
- White Box Available Upon Request
- Activated Alley for Retail
- Public Parking Garage









← Hudson's Site

← Comerica Park

← Little Caesars Arena

← City Modern

Brush Park

The Scott  
220 Units

New Marriott Hotel →

Woodward West  
220 Units

→ SOMA  
Detroit

1,300 - 3,483 RSF  
Available

O'Connor Real Estate

Future Development



A TRUSTED AND RESPECTED  
MEMBER OF THE COMMUNITY,  
O'CONNOR REAL ESTATE  
BRINGS 20 YEARS OF  
EXPERIENCE AND EXPERTISE  
TO THE COMMERCIAL OFFICE  
AND RETAIL MARKET.

For more information about SOMA, please contact  
O'Connor Real Estate

**Vincent Mazzola**  
**+ 313 704 2678**  
**[vincent@oconnordetroit.com](mailto:vincent@oconnordetroit.com)**

**O'Connor** Real Estate

The information used in this marketing material was taken from sources believed to be reliable. O'Connor Real Estate makes no representation, warranty, or endorsement made as to the accuracy, reliability, adequacy, or completeness of any information or analysis contained herein and disclaims any and all liability that may be based on such information, errors therein or omissions therefrom. You and your advisors should conduct a careful and independent investigation of the property to determine your satisfaction with the suitability of the property for your needs.