



NEIGHBORHOOD

NORTH CORKTOWN

LOCATION

SW CORNER OF TRUMBULL
AND MARTIN LUTHER KING

SPACE TYPE

RETAIL

On the National Registry of Historic Buildings, Trinity Episcopal Church is more than 5,000 square feet of commercial space ideal for hospitality. The beautiful English Gothic-style building is located at the corner of Martin Luther King and Trumbull, in North Corktown, with onsite and non-metered street parking. The church was designed by prominent local architects George Mason and Zachariah Rice with thick limestone walls, more than 200 carvings on the exterior and a tower with 10 bells. It was built in 1890-1892 by owner James E. Scripps, who founded the Detroit News.

ASKING RENT

\$18/SF NNN

NEIGHBORS

Rocket Data Center, Michigan Central Station, Ford Motor Company, Level 3 Communications, Southwest Greenway, Honeybee Market, Slows BBQ, Airspace Link, Ford Motor Co.'s Book Depository, New Lab Michigan Central, Detroit Bus Company, IMA, Metropolis Cycles, Mercury Burger Bar, Grandma Bob's, Corktown Health Center, Detroit Public Safety Academy and UPS Detroit International Import Hub.

SIZE

5,170 RSF

ONSITE PARKING

20+ SPACES

YEAR BUILT

1893

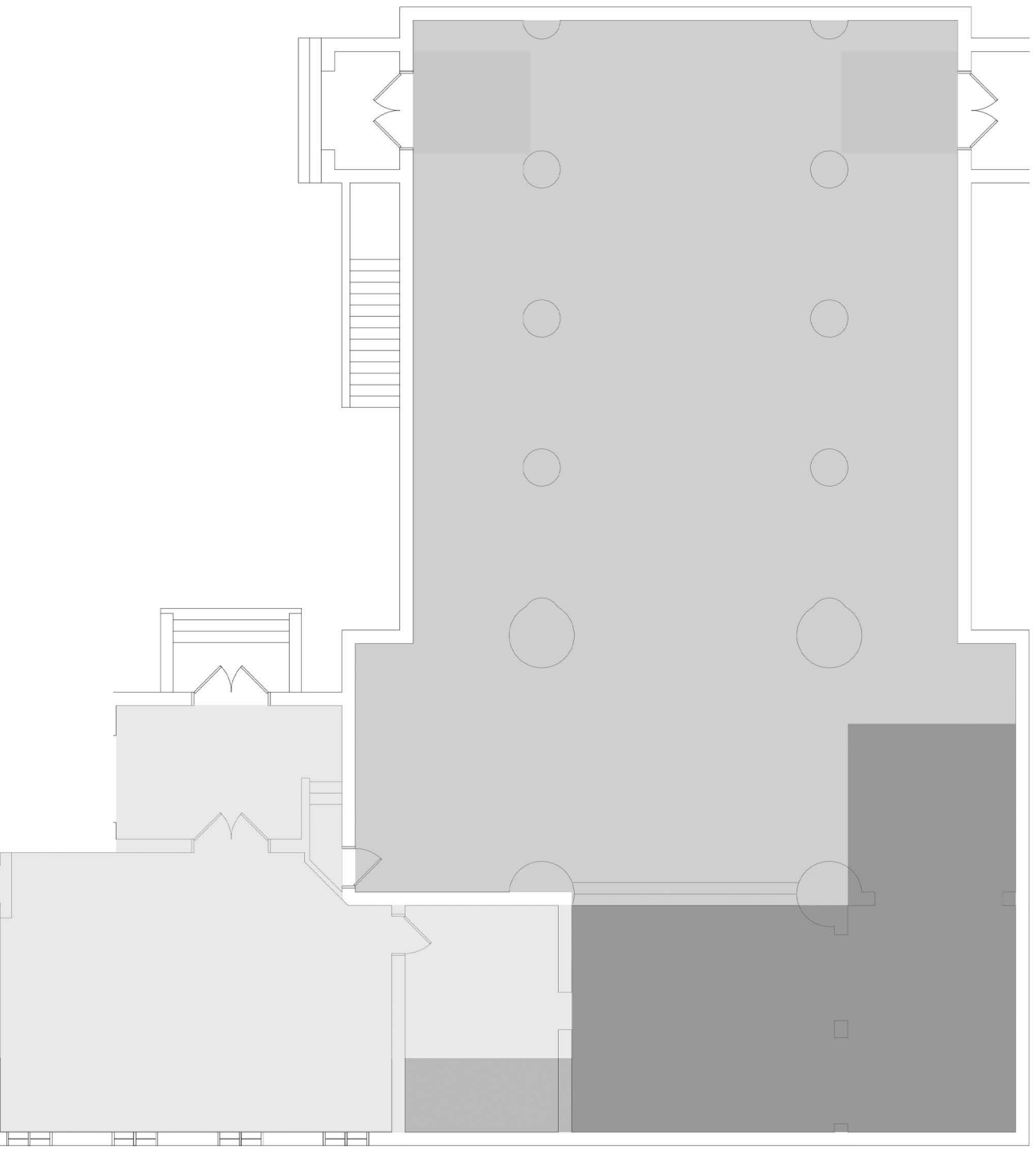
3411

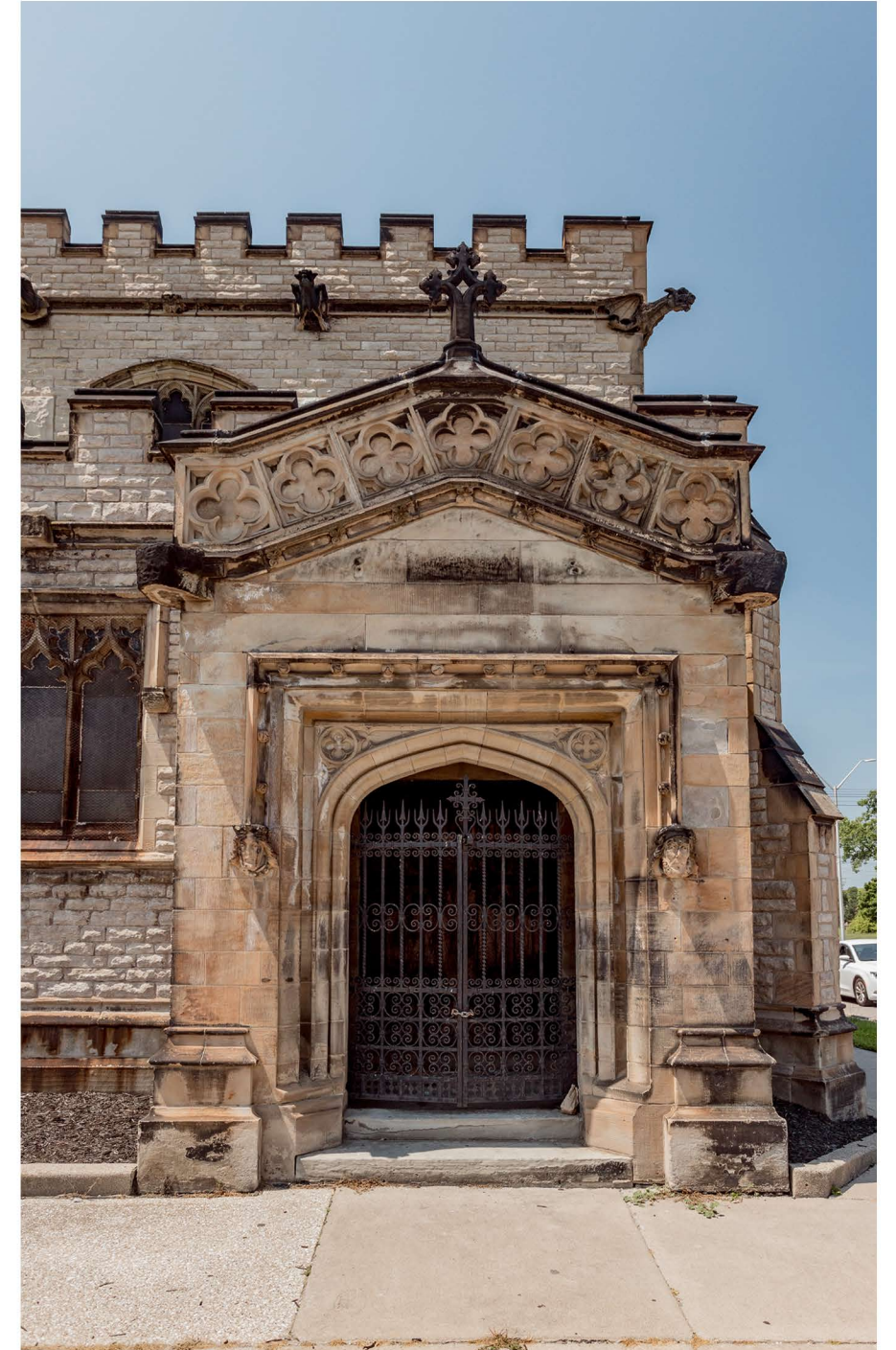
TRUMBULL

North Corktown

FEATURES

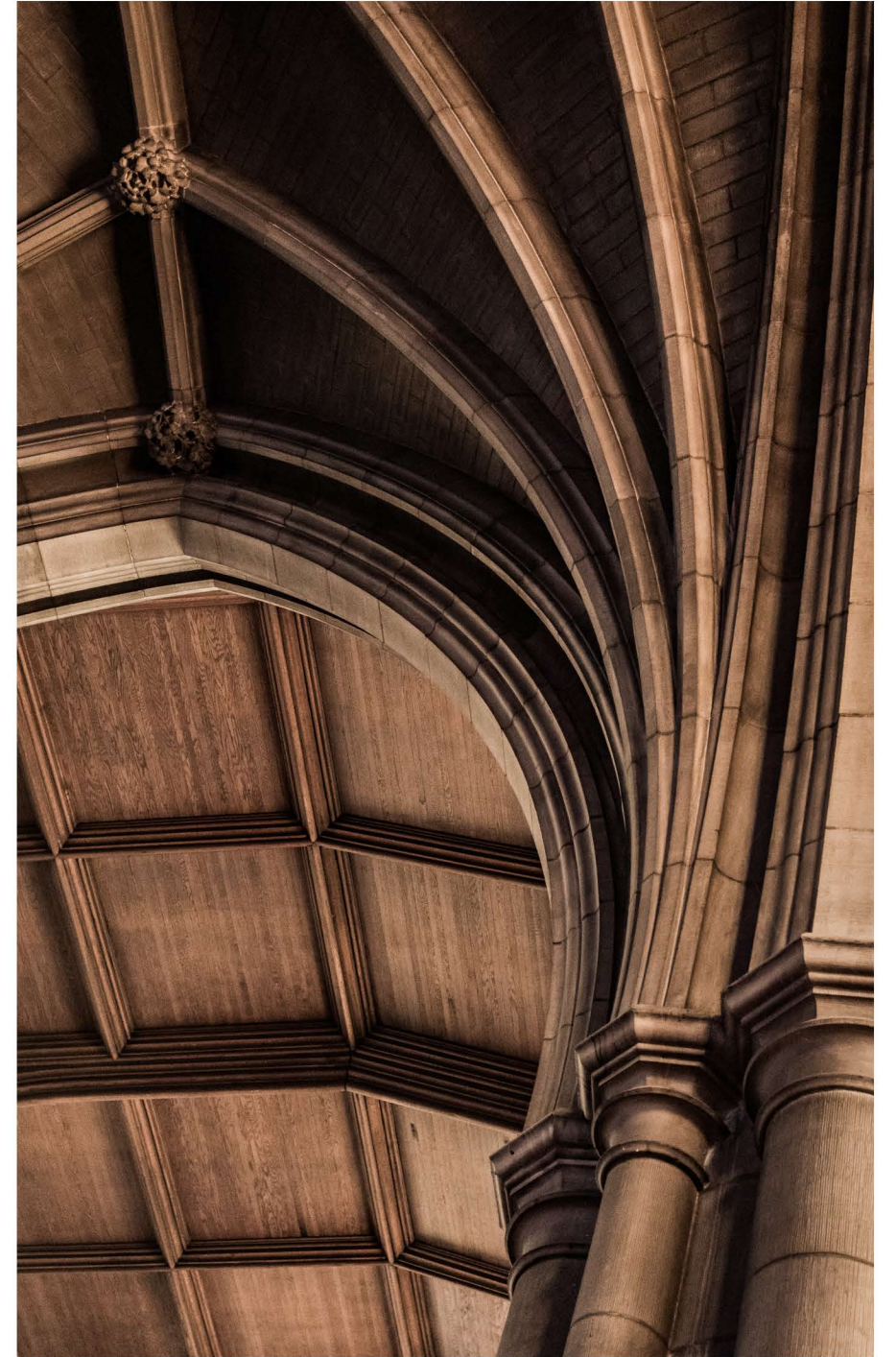
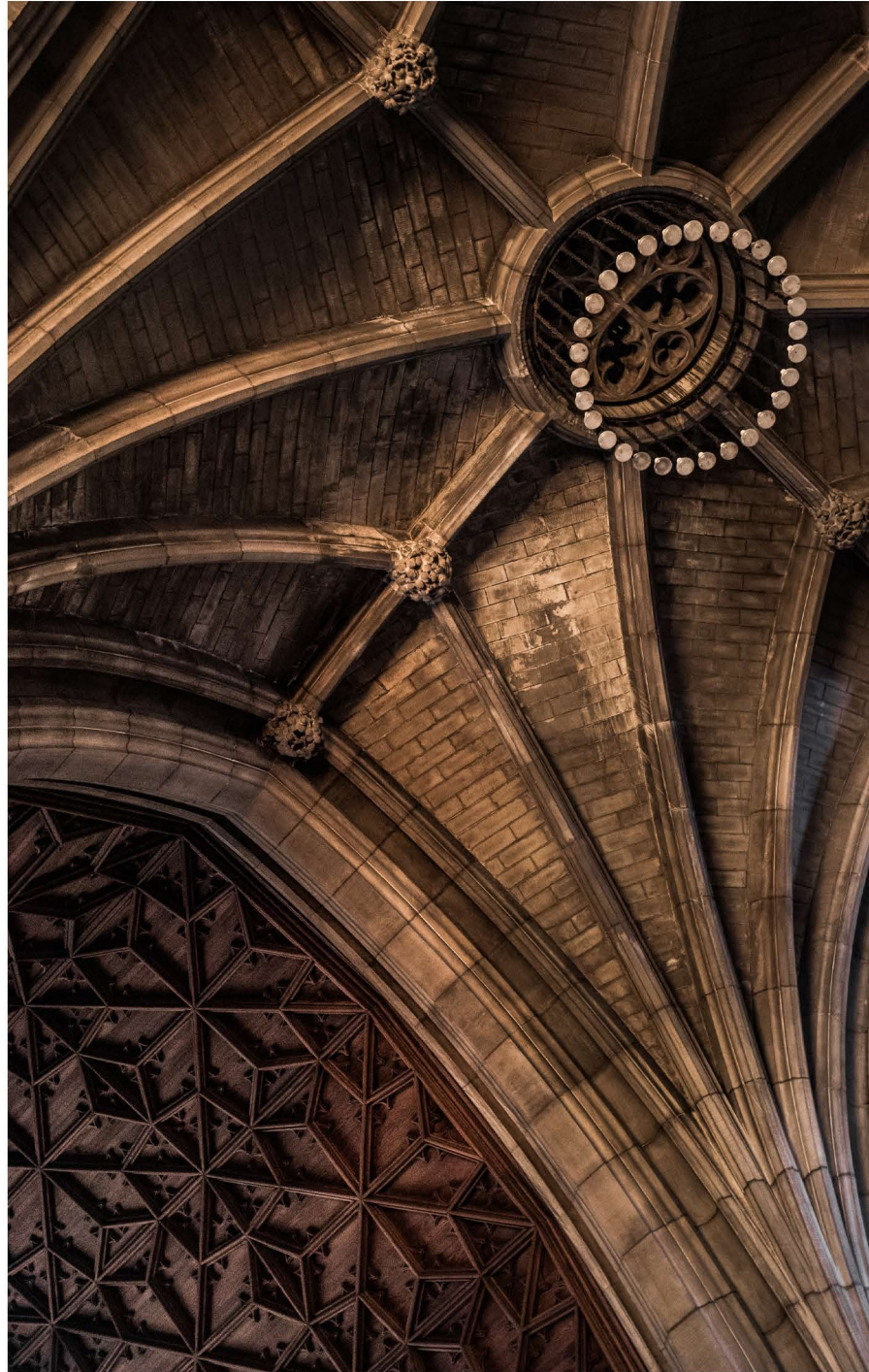
- 5,170 Square Feet
- National Registry of Historic Buildings
- English Gothic-Style Architecture
- Highly Visible Intersection of MLK and Trumbull











**3411
Trumbull**

2,611 RSF
Available



A TRUSTED AND RESPECTED MEMBER OF THE COMMUNITY, O'CONNOR REAL ESTATE BRINGS 20 YEARS OF EXPERIENCE AND EXPERTISE TO THE COMMERCIAL OFFICE AND RETAIL MARKET.

For more information about the space
available at 3411 Trumbull,
please contact O'Connor Real Estate

Vincent Mazzola
+ 313 704 2678
vincent@oconnordetroit.com

Melissa Price
+ 313 421 1557
melissa@oconnordetroit.com

O'Connor Real Estate

The information used in this marketing material was taken from sources believed to be reliable. O'Connor Real Estate makes no representation, warranty, or endorsement made as to the accuracy, reliability, adequacy, or completeness of any information or analysis contained herein and disclaims any and all liability that may be based on such information, errors therein or omissions therefrom. You and your advisors should conduct a careful and independent investigation of the property to determine your satisfaction with the suitability of the property for your needs.