



NEIGHBORHOOD

CORKTOWN

LOCATION

NE CORNER OF TRUMBULL  
AND LABROSSE

SPACE TYPE

RETAIL / OFFICE



Located on a highly desirable stretch of Trumbull Avenue in Corktown, this 2,611-square-foot corner building is perfect for creative office or retail space. Built for a single-use tenant and meticulously maintained, this historic brick building commands a visible location at the corner of Labrosse and Trumbull in the busy retail corridor.

ASKING RENT

**\$25/SF NNN**

NEIGHBORS

Alpino, Folk, Meta Physica Wellness Center, Rocket Data Center, Michigan Central Station, Ford Motor Company, Level 3 Communications, Southwest Greenway, Honeybee Market, Slows BBQ, Airspace Link, Ford Motor Co.'s Book Depository, New Lab Michigan Central, Detroit Bus Company, IMA, Metropolis Cycles, Mercury Burger Bar, Grandma Bob's, Corktown Health Center, Detroit Public Safety Academy and UPS Detroit International Import Hub.

SIZE

**2,611 SF**

CEILING HEIGHTS

**24'**

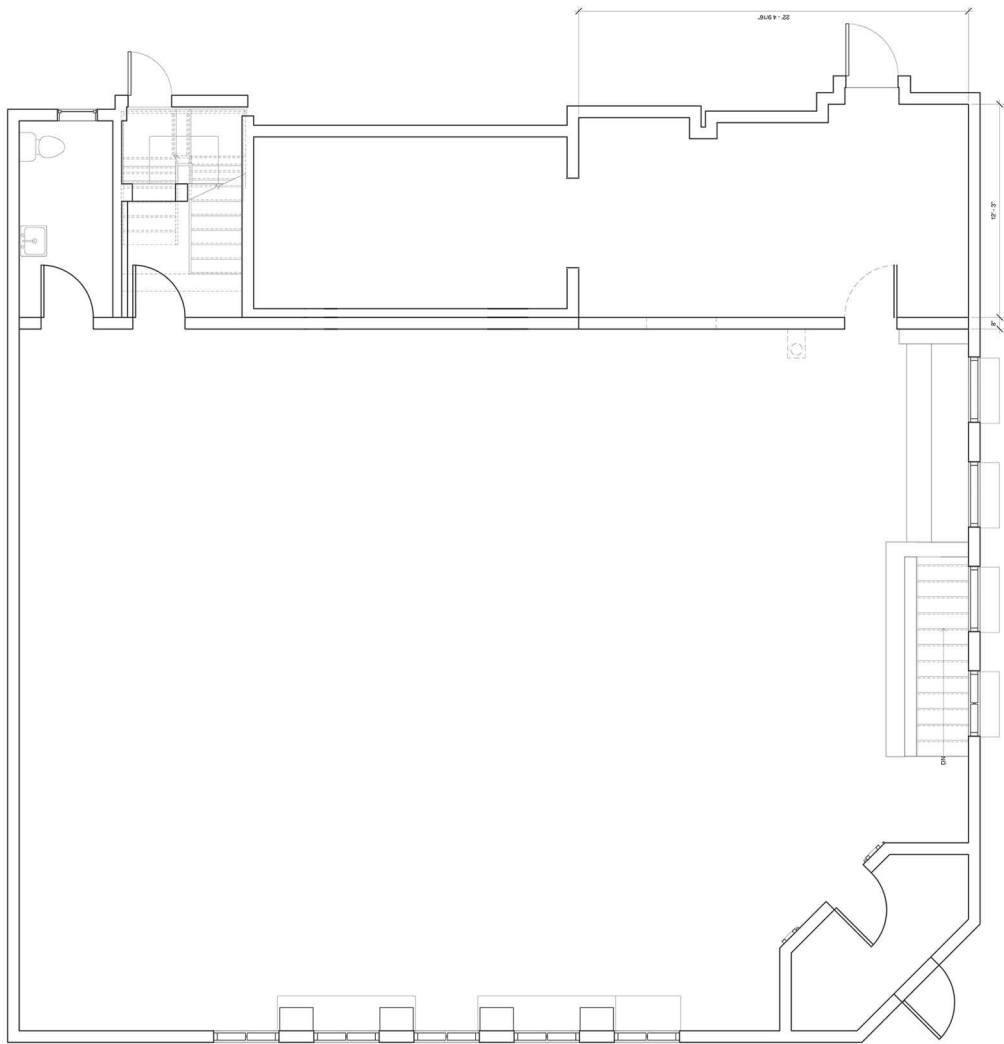
# 1500

## TRUMBULL

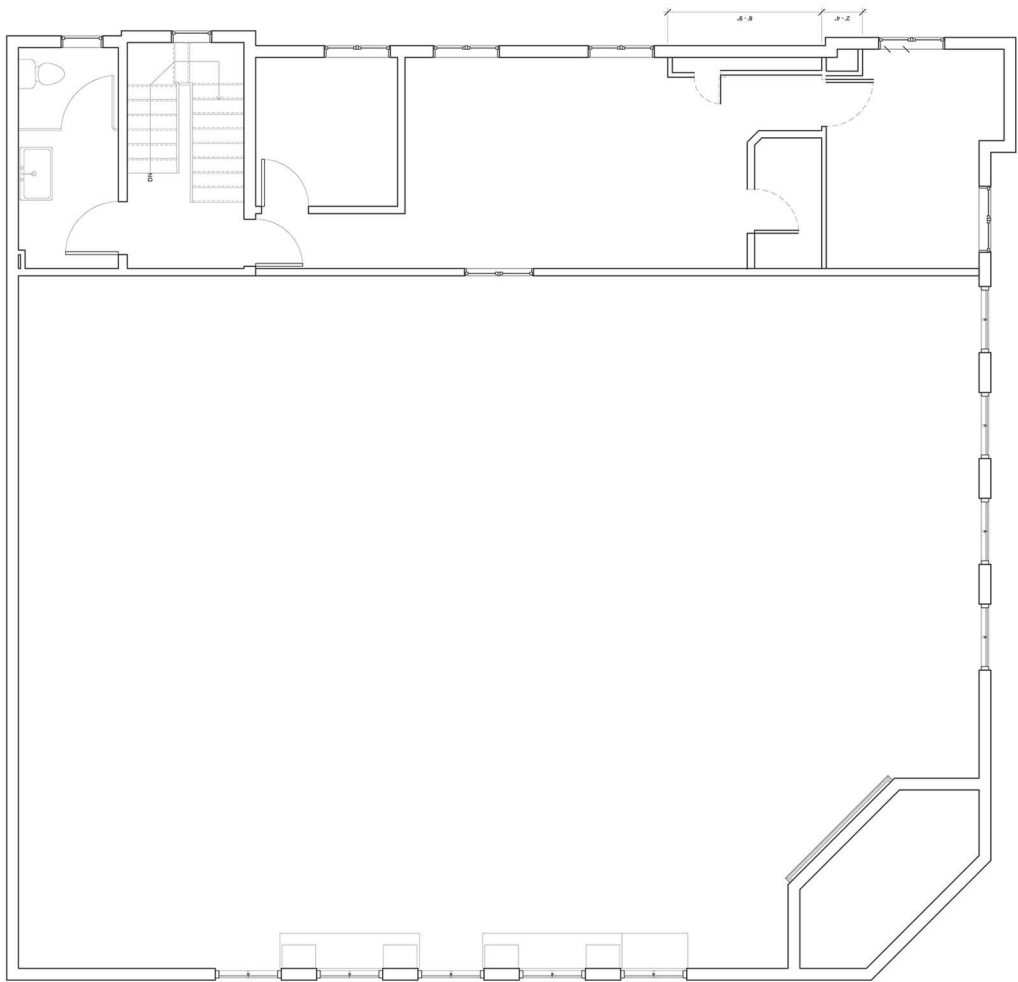
Corktown

**FEATURES**

- 2,611 Square Feet
- Kitchen
- 2 Private Offices
- 1 Conference Room
- Ensuite Toilet Rooms



FIRST FLOOR

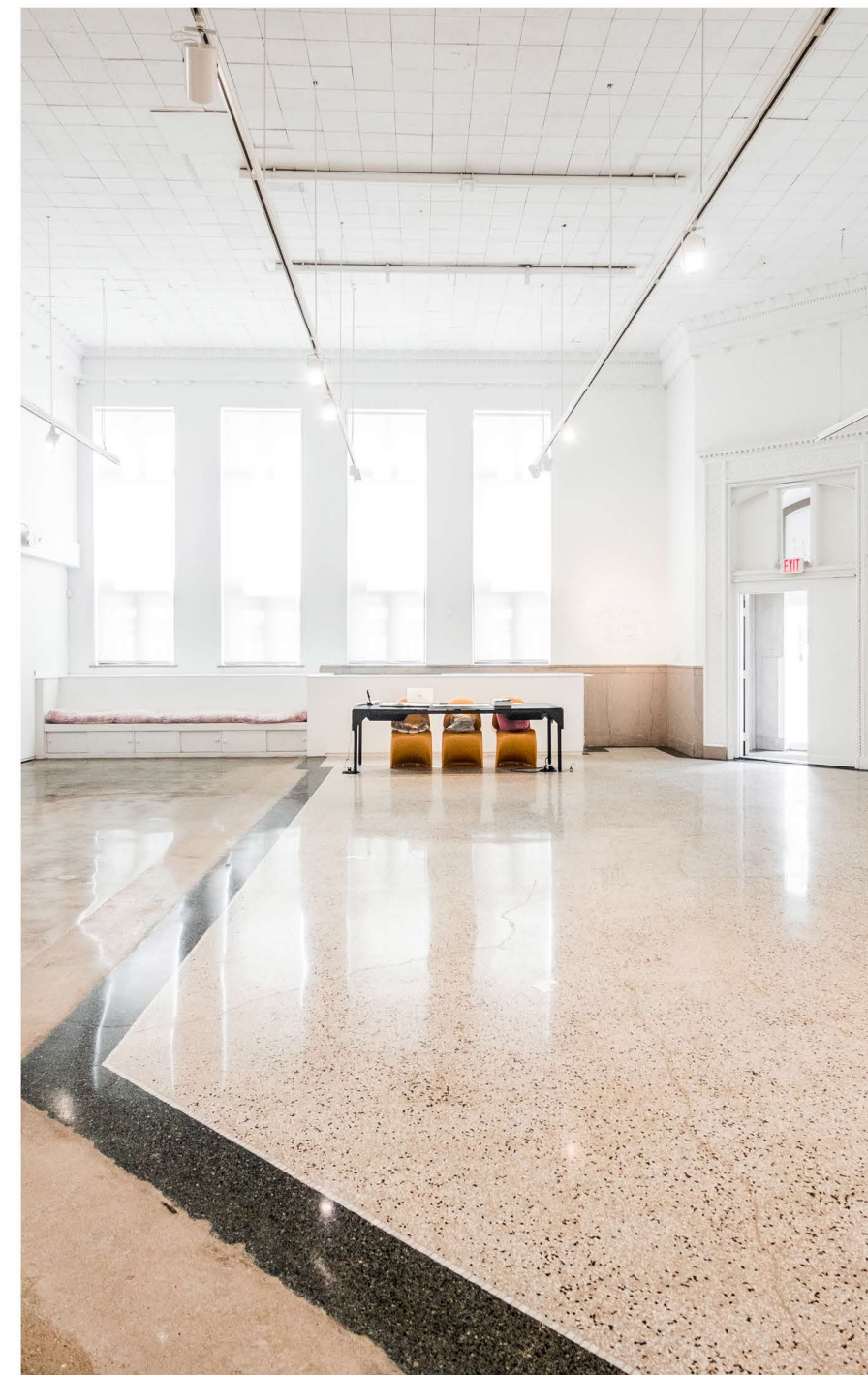


SECOND FLOOR

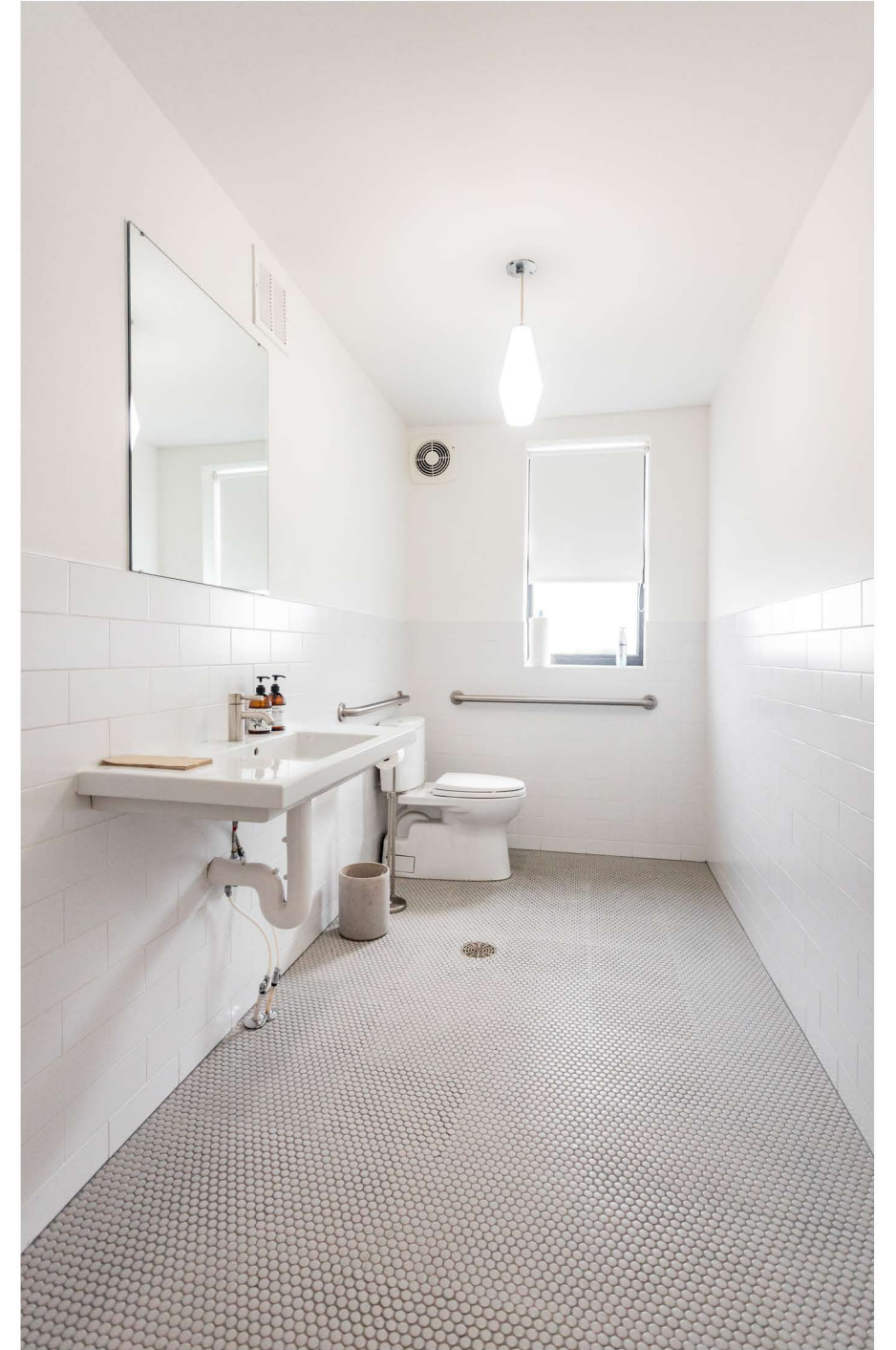








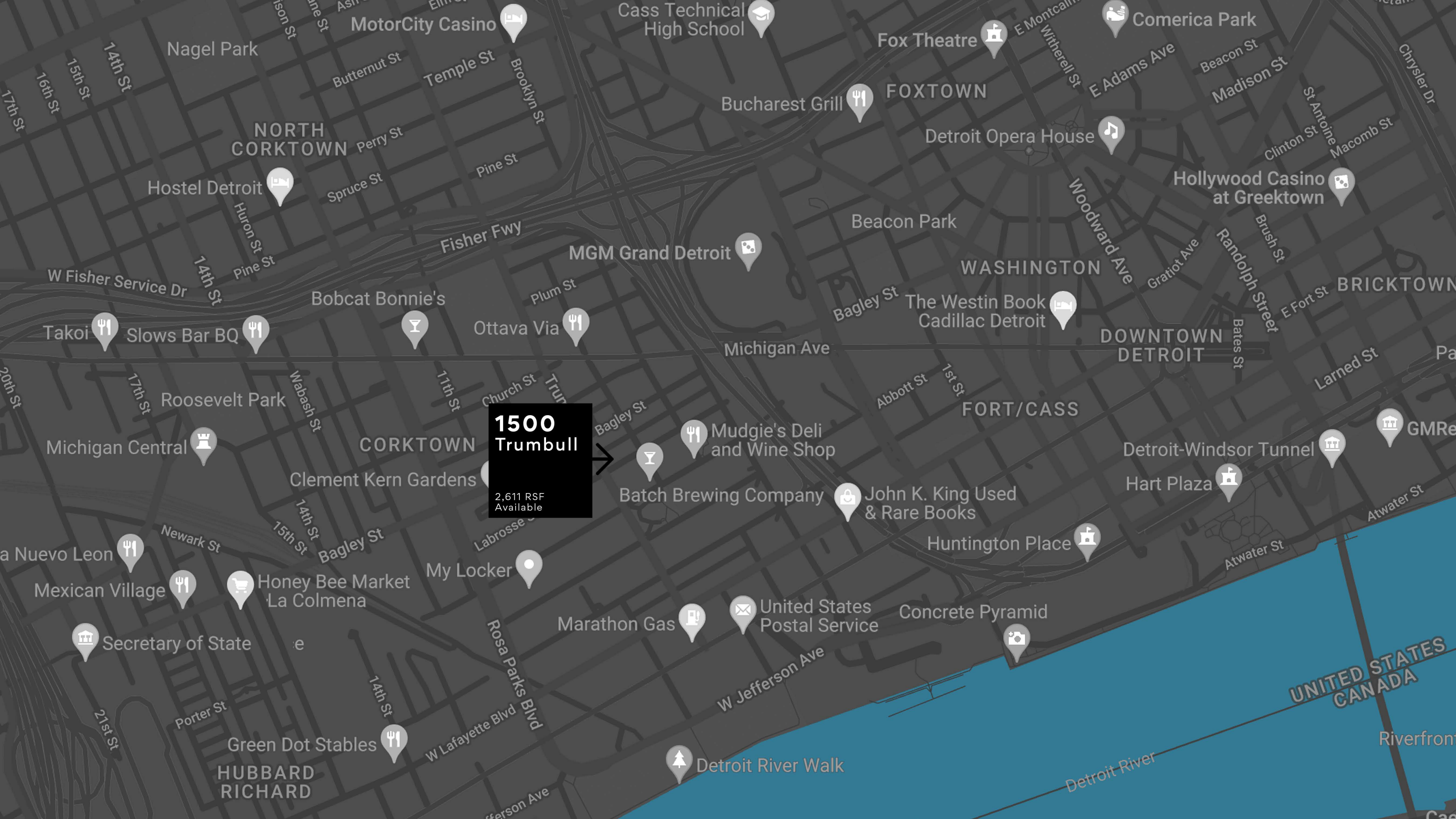












**1500  
Trumbull**

2,611 RSF  
Available





# A TRUSTED AND RESPECTED MEMBER OF THE COMMUNITY, O'CONNOR REAL ESTATE BRINGS 20 YEARS OF EXPERIENCE AND EXPERTISE TO THE COMMERCIAL OFFICE AND RETAIL MARKET.

For more information about the space  
available at 1500 Trumbull,  
please contact O'Connor Real Estate

**Vincent Mazzola**  
**+ 313 704 2678**  
**vincent@oconnordetroit.com**

**Ryan Cooley**  
**+ 313 963 9891**  
**ryan@oconnordetroit.com**

**Melissa Price**  
**+ 313 421 1557**  
**melissa@oconnordetroit.com**

**O'Connor** Real Estate

The information used in this marketing material was taken from sources believed to be reliable. O'Connor Real Estate makes no representation, warranty, or endorsement made as to the accuracy, reliability, adequacy, or completeness of any information or analysis contained herein and disclaims any and all liability that may be based on such information, errors therein or omissions therefrom. You and your advisors should conduct a careful and independent investigation of the property to determine your satisfaction with the suitability of the property for your needs.