



NEIGHBORHOOD

**CORKTOWN**

LOCATION

**NW CORNER OF VERMONT  
AND PORTER**

SPACE TYPE

**OFFICE / FLEX**

1401 Vermont is located in Corktown's advanced technology hub, just a few blocks from Michigan Central Station and the Book Depository. The building offers creative office suites starting at 2,735 square feet up to 6,427 square feet. Common entrance and corridors recently renovated. 24-hour badge access control and onsite parking available.

ASKING RENT

**Negotiable**

SIZE

**2,735 - 6,427 RSF**

NEIGHBORS

Rocket Data Center, Michigan Central Station, Ford Motor Company, Level 3 Communications, Southwest Greenway, Honeybee Market, Airspace Link, Ford Motor Co.'s Book Depository, New Lab Michigan Central, Detroit Bus Company, IMA, Slows BBQ, Metropolis Cycles, Mercury Burger Bar, Grandma Bob's, Corktown Health Center, Detroit Public Safety Academy and UPS Detroit International Import Hub.

ONSITE PARKING

**20+ SPACES**

CEILING HEIGHTS

**14'**

# 1401

## VERMONT

Suite 220

### FEATURES

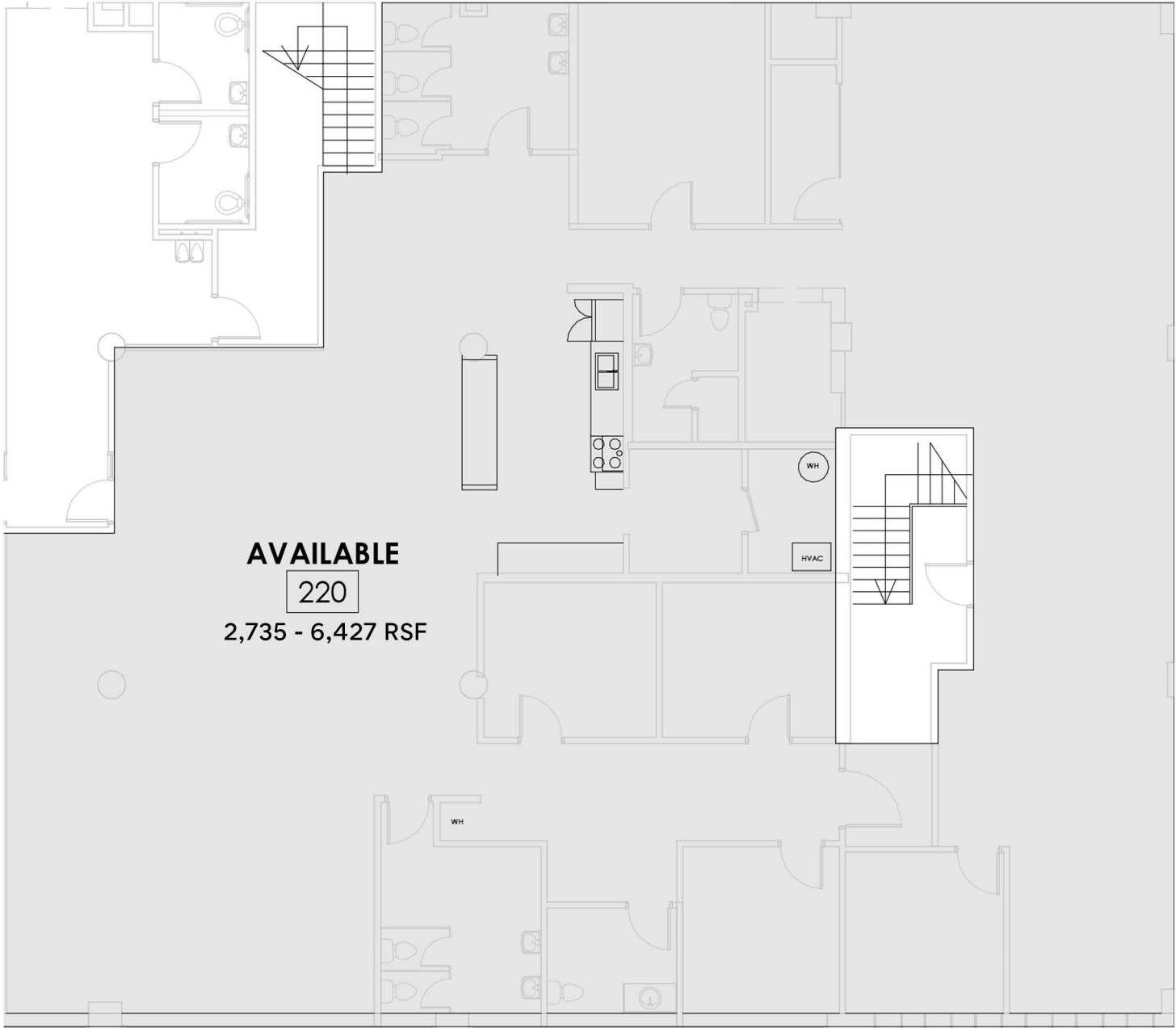
2,735 - 6,427 Square Feet

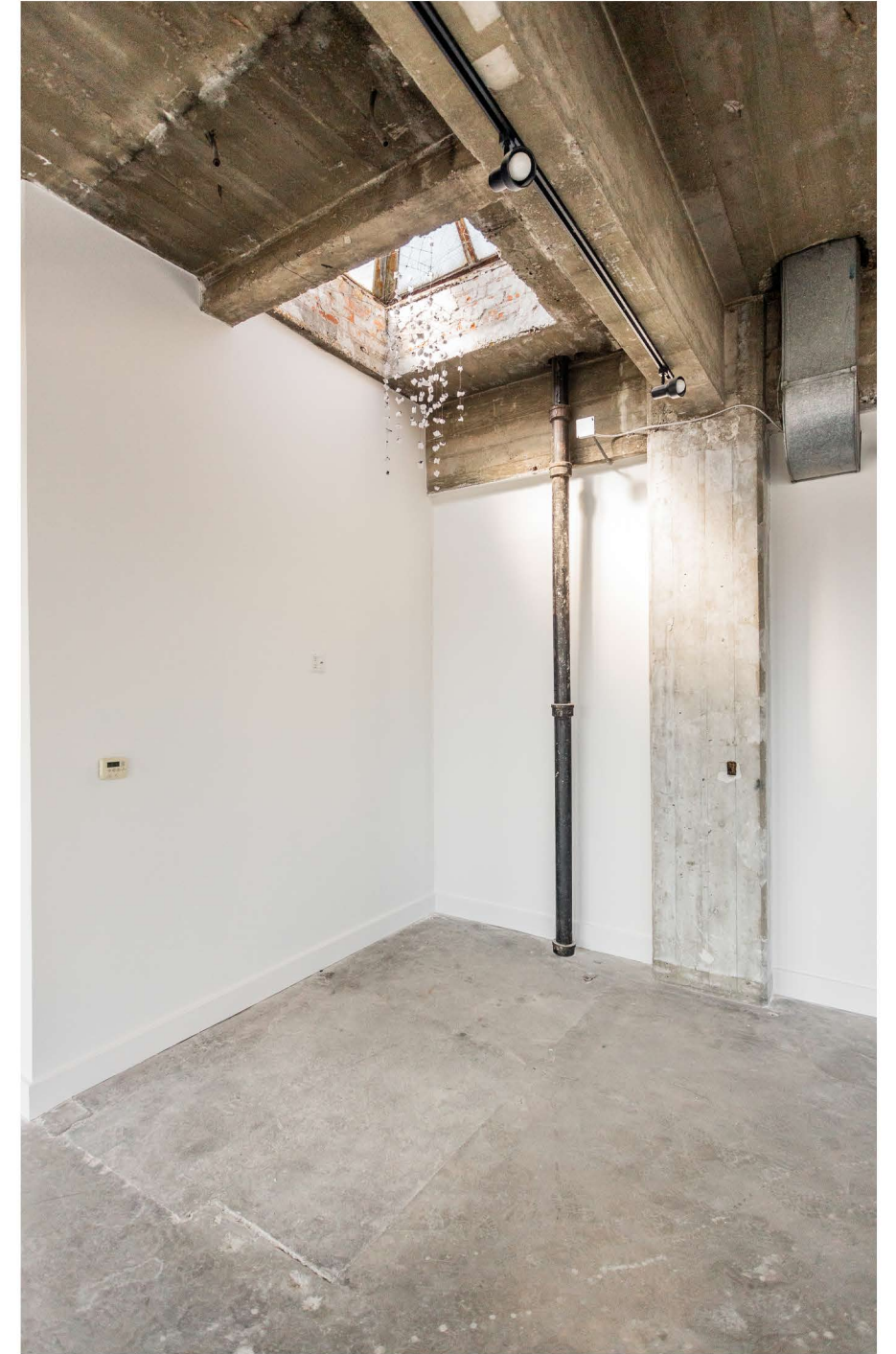
Kitchen

5 Private Offices

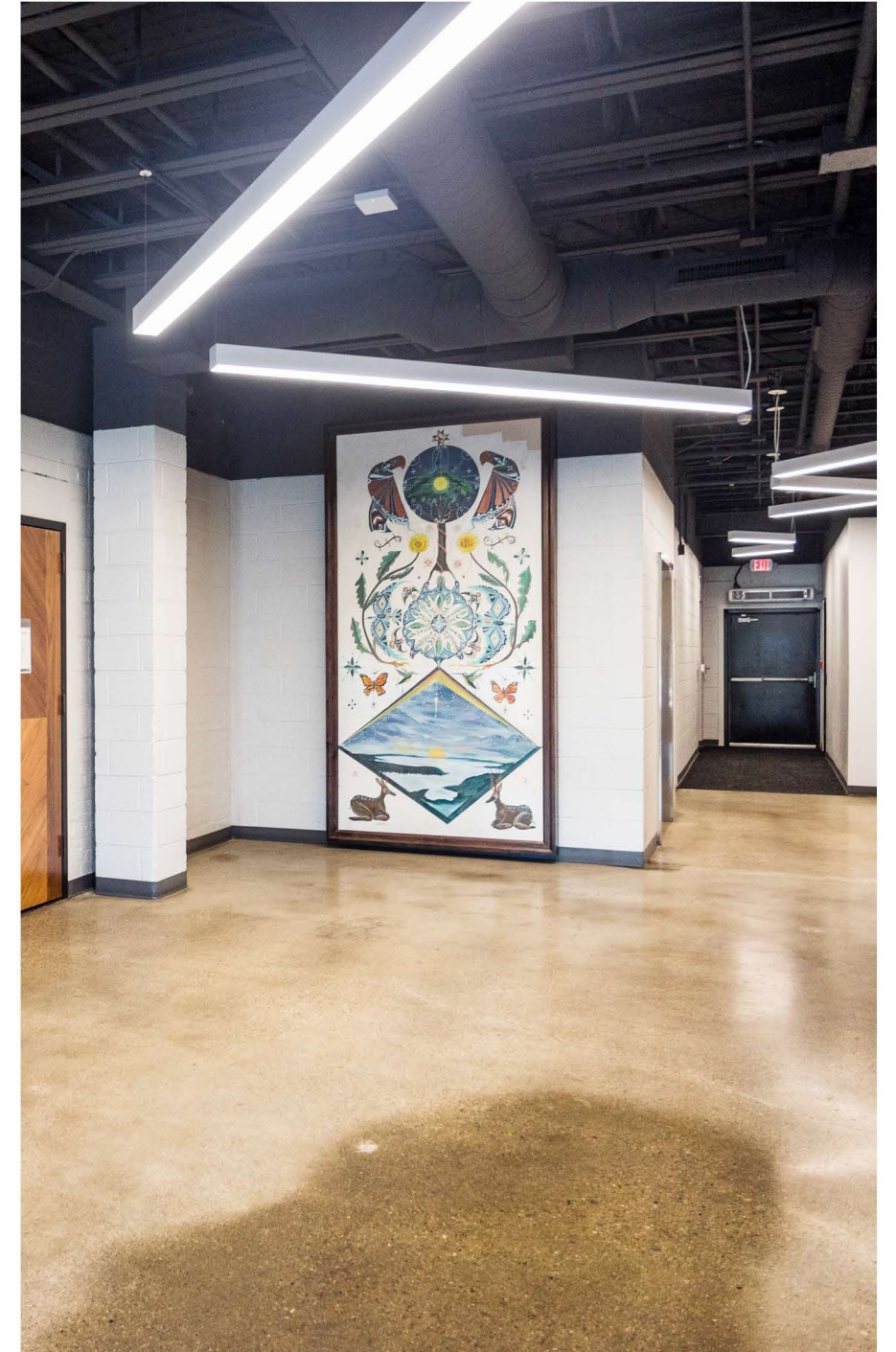
1 Conference Room

Ensuite Toilet  
Rooms



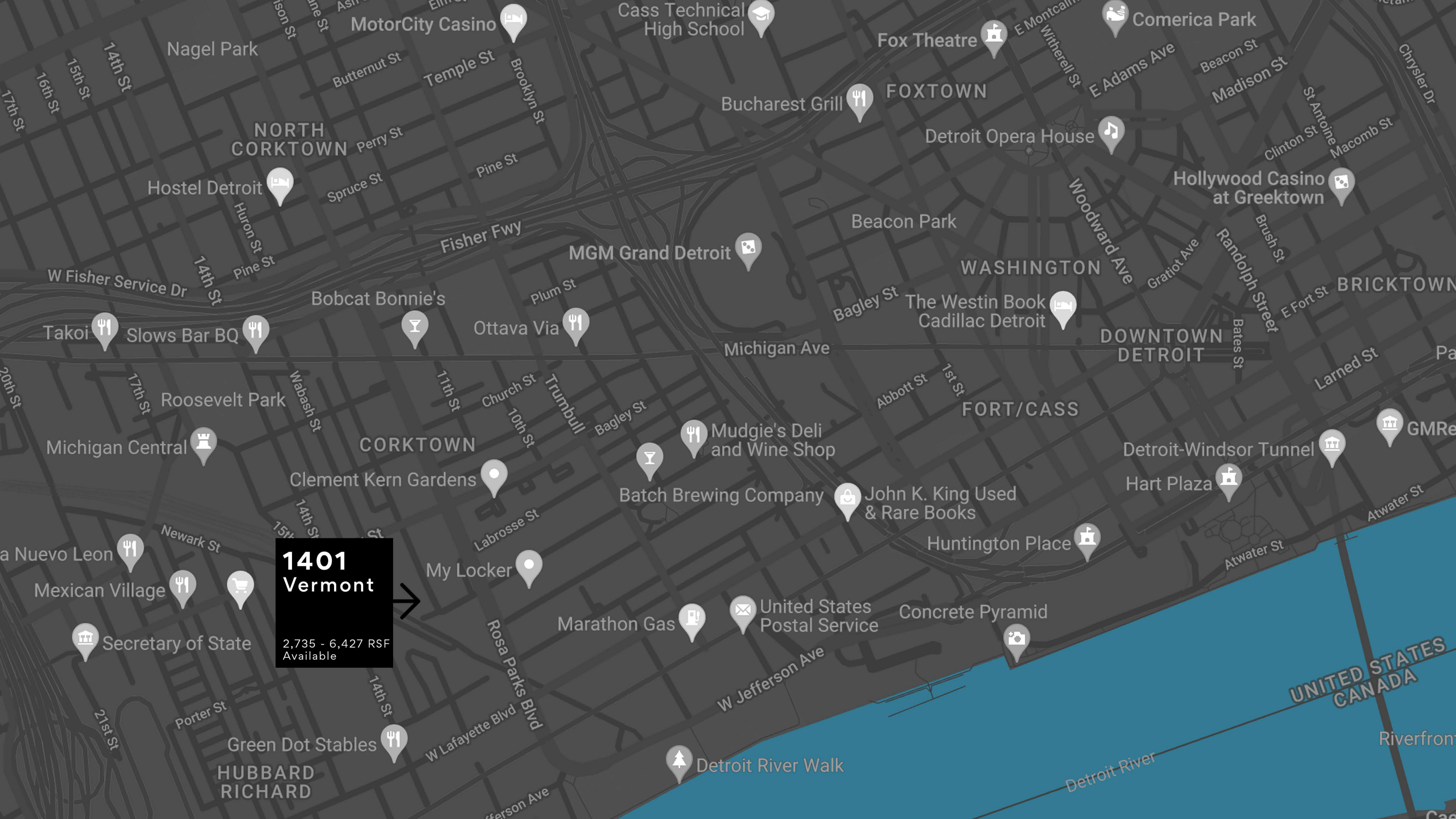






BUILDING LOBBY





**1401  
Vermont**  
2,735 - 6,427 RSF  
Available

MotorCity Casino

Cass Technical High School

Fox Theatre

Comerica Park

NORTH  
CORKTOWN

FOXTOWN

Hostel Detroit

Bucharest Grill

Detroit Opera House

Hollywood Casino  
at Greektown

MGM Grand Detroit

Beacon Park

WASHINGTON

BRICKTOWN

Takoi

Slows Bar BQ

Bobcat Bonnie's

Ottava Via

Michigan Ave

The Westin Book  
Cadillac Detroit

DOWNTOWN  
DETROIT

Roosevelt Park

CORKTOWN

FORT/CASS

GMRe

Michigan Central

Mudgie's Deli  
and Wine Shop

Detroit-Windsor Tunnel

Clement Kern Gardens

Batch Brewing Company

John K. King Used  
& Rare Books

Hart Plaza

a Nuevo Leon

**1401  
Vermont**

My Locker

Batch Brewing Company

Huntington Place

Mexican Village

Marathon Gas

United States  
Postal Service

Concrete Pyramid

Secretary of State

2,735 - 6,427 RSF  
Available

Green Dot Stables

HUBBARD  
RICHARD

Detroit River Walk

UNITED STATES  
CANADA

Detroit River

Riverfront



A TRUSTED AND RESPECTED  
MEMBER OF THE COMMUNITY,  
O'CONNOR REAL ESTATE  
BRINGS 20 YEARS OF  
EXPERIENCE AND EXPERTISE  
TO THE COMMERCIAL OFFICE  
AND RETAIL MARKET.

For more information about the office spaces  
available at 1401 Vermont,  
please contact O'Connor Real Estate

**Vincent Mazzola**

**+ 313 704 2678**

**[vincent@oconnordetroit.com](mailto:vincent@oconnordetroit.com)**

**O'Connor** Real Estate

The information used in this marketing material was taken from sources believed to be reliable. O'Connor Real Estate makes no representation, warranty, or endorsement made as to the accuracy, reliability, adequacy, or completeness of any information or analysis contained herein and disclaims any and all liability that may be based on such information, errors therein or omissions therefrom. You and your advisors should conduct a careful and independent investigation of the property to determine your satisfaction with the suitability of the property for your needs.