



NEIGHBORHOOD

NEW CENTER

LOCATION

**NE CORNER OF WOODWARD
AND MILWAUKEE**

SPACE TYPE

RETAIL

6505 Woodward Ave offers a premium 1,275-square-foot end cap retail. Located in New Center, this suite is the last vacant retail in a thriving block of fashion, restaurants and home goods. Metered parking available on Woodward and steps from the Baltimore Street station.

ASKING RENT

\$30/SF NNN

SIZE

1,275 RSF

NEIGHBORS

Full Lotus Yoga, Lake Trust Credit Union, TechTown, Oak and Reel, Chroma, Vault of Midnight, Boro, BasBlue, Baobab Fare, The Fisher Building, Wayne State, Creme Brulee, The Ten, Time Will Tell, Chroma, Supino's Pizza, Shinola Headquarters, CCS, Yum Village, Bucharest Grill, Z's Villa Grill.

CEILING HEIGHT

12'

6505

WOODWARD

New Center

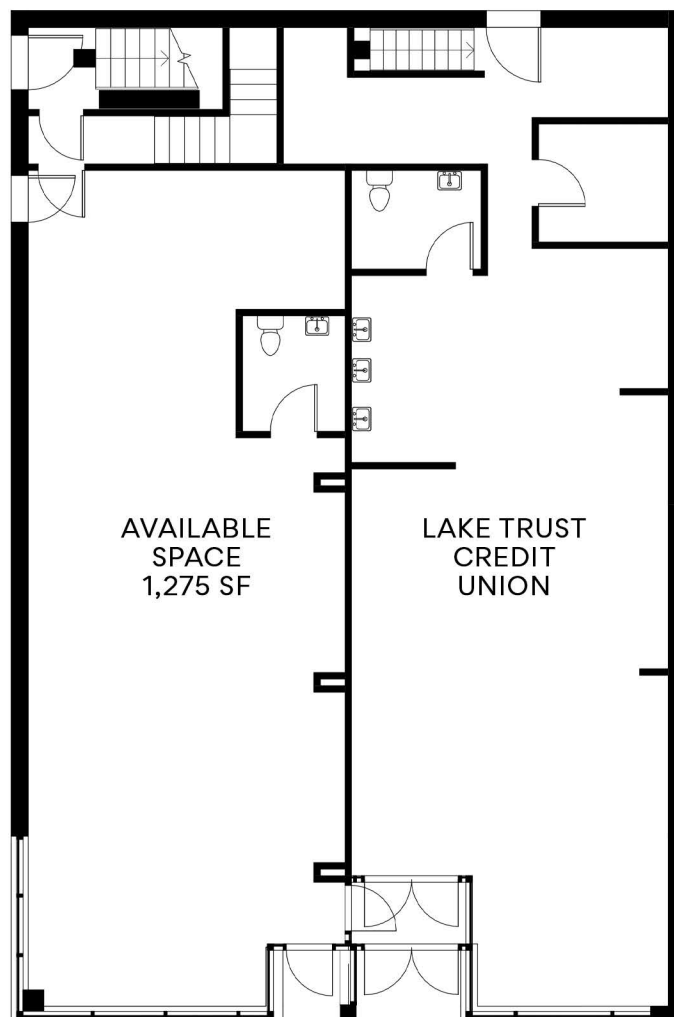
FEATURES

1,275 Square Feet

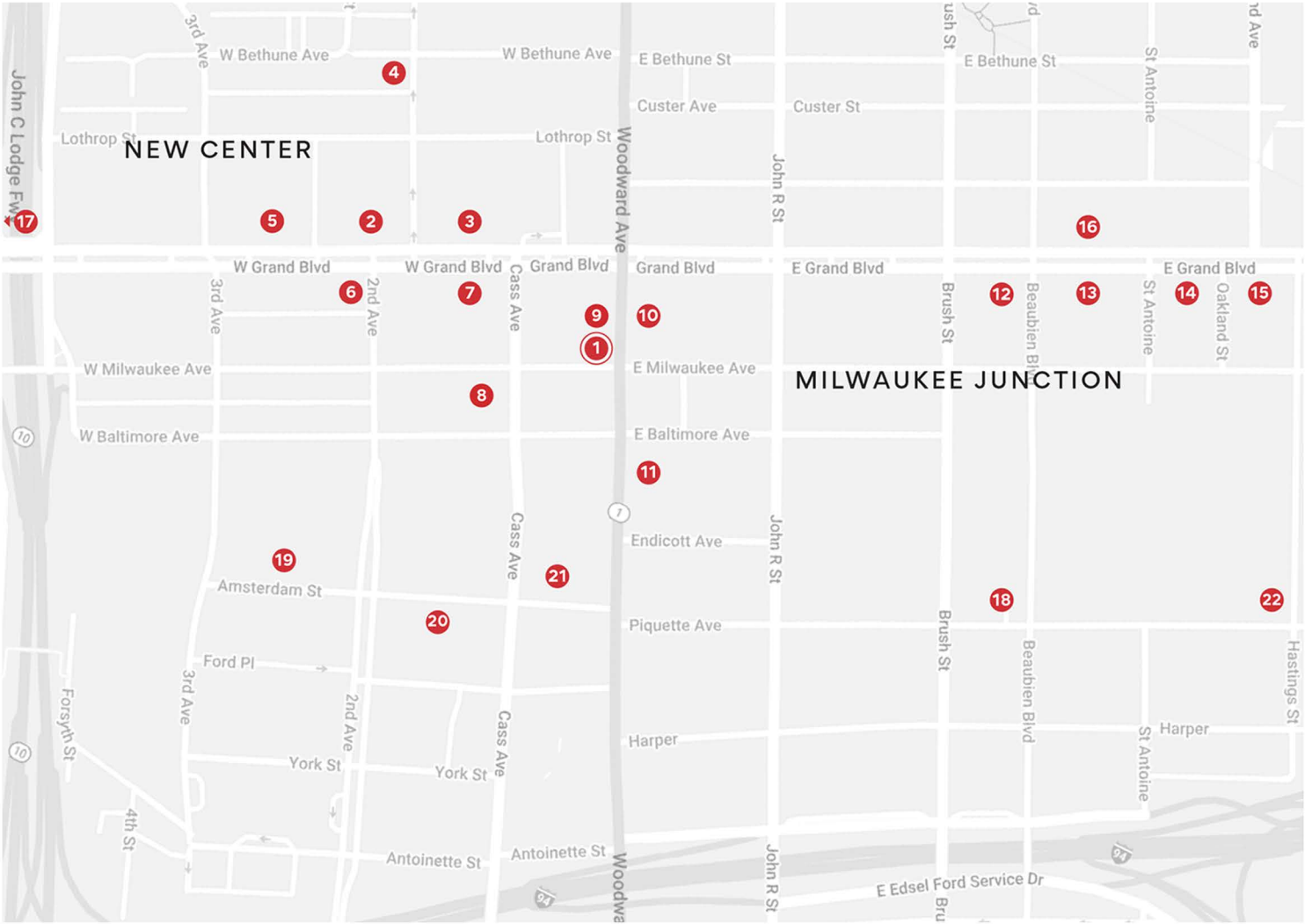
Premium End Cap
Retail

Woodward Avenue
Frontage

Designed for Open Slider
Storefront







Area Retailers & Institutions

1 6505 Woodward

- 2 Fisher Building
- 3 New Center 1, Hotel St. Regis
- 4 Midnight Golf
- 5 Orange Theory, Beyond Juice, Comerica Bank
- 6 New Center Park
- 7 Cadillac Place
- 8 Shinola World Headquarters, Center for Creative Studies
- 9 Lake Trust Credit Union, Supino Pizza, Ferne, The Kitchen, the Norwood, TEN Nail Bar, Urbanum, Joe Louis Kitchen
- 10 Yum Village, Boabab Fare, The Duck
- 11 Time Will Tell, Huntington Bank, Crémé Brûlé

- 12 Chroma, Milwaukee Caffe, Kiesling
- 13 Oak & Reel, Freya
- 14 Vault of Midnight, Boro, Some Day Gallery, Midwest Commons, Isabelle Weiss Gallery
- 15 Gathering Coffee Co., Batch Brewing, Tangent Gallery
- 16 Jam Handy
- 17 Henry Ford Health Systems
- 18 Ford Piquette Plant
- 19 Detroit Pistons Practice Facility, Planet Fitness, Plum Market
- 20 Techtown
- 21 WSU Bioscience Center,
- 22 Fisher Body Plant 400 unit residential development

A TRUSTED AND RESPECTED MEMBER OF THE COMMUNITY, O'CONNOR REAL ESTATE BRINGS 20 YEARS OF EXPERIENCE AND EXPERTISE TO THE COMMERCIAL OFFICE AND RETAIL MARKET.

For more information about the retail space
available at 6505 Woodward,
please contact O'Connor Real Estate

Vincent Mazzola

+ 313 704 2678

vincent@oconnordetroit.com

Melissa Price

+ 313 421 1557

melissa@oconnordetroit.com

O'Connor Real Estate

The information used in this marketing material was taken from sources believed to be reliable. O'Connor Real Estate makes no representation, warranty, or endorsement made as to the accuracy, reliability, adequacy, or completeness of any information or analysis contained herein and disclaims any and all liability that may be based on such information, errors therein or omissions therefrom. You and your advisors should conduct a careful and independent investigation of the property to determine your satisfaction with the suitability of the property for your needs.