



NEIGHBORHOOD

ISLANDVIEW

LOCATION

SE CORNER OF KERCHEVAL AND TOWNSEND

SPACE TYPE

RETAIL

The Townsend at 7410 Kercheval is the first flagship mixed use development by Banyan Investments at the entrance to the Villages. This new construction building in Islandview offers state of the art suites. Starting at 1,200 square feet ideal for retail and restaurant tenants with patio dining available. In addition to onsite parking, The Townsend is located on the City of Detroit's Park Streetscape Program connecting neighborhoods with business corridors.

ASKING RENT

\$25 per RSF NNN

NEIGHBORS

The Empowerment Plan, Sister Pie, Belle Isle, Red Hook, Marrow, Butzel Family Recreation Center, Saint Charles, Two Birds, Faircloth, Eugenie, Metropolitan Bar + Kitchen, Yum Village and growing.

SIZE

1,200 - 9,000 SF

ONSITE PARKING

20+ SPACES

CEILING HEIGHTS

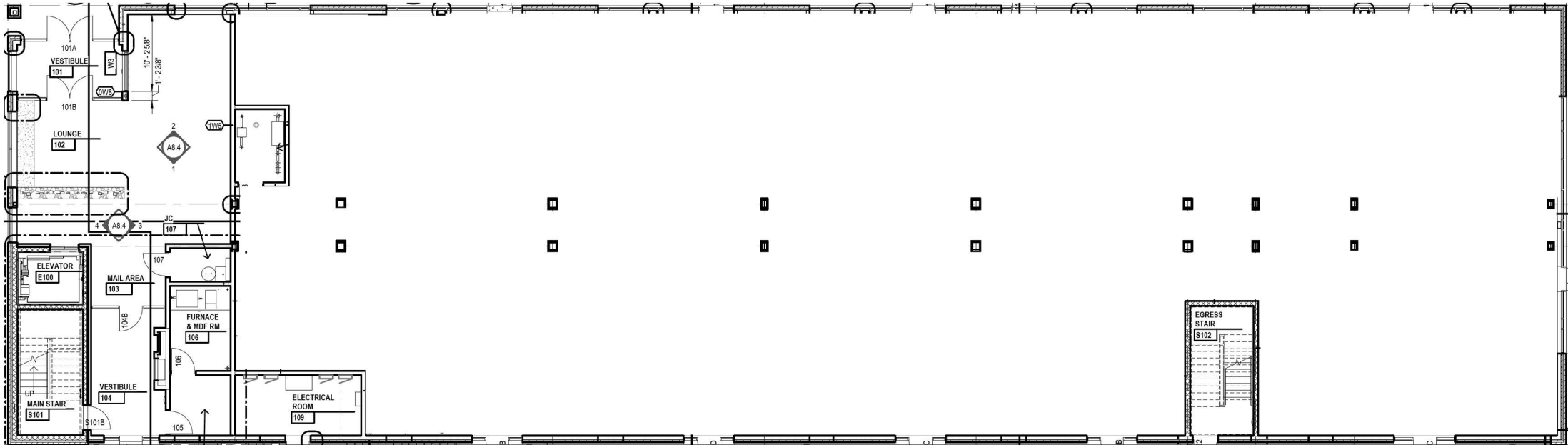
14'

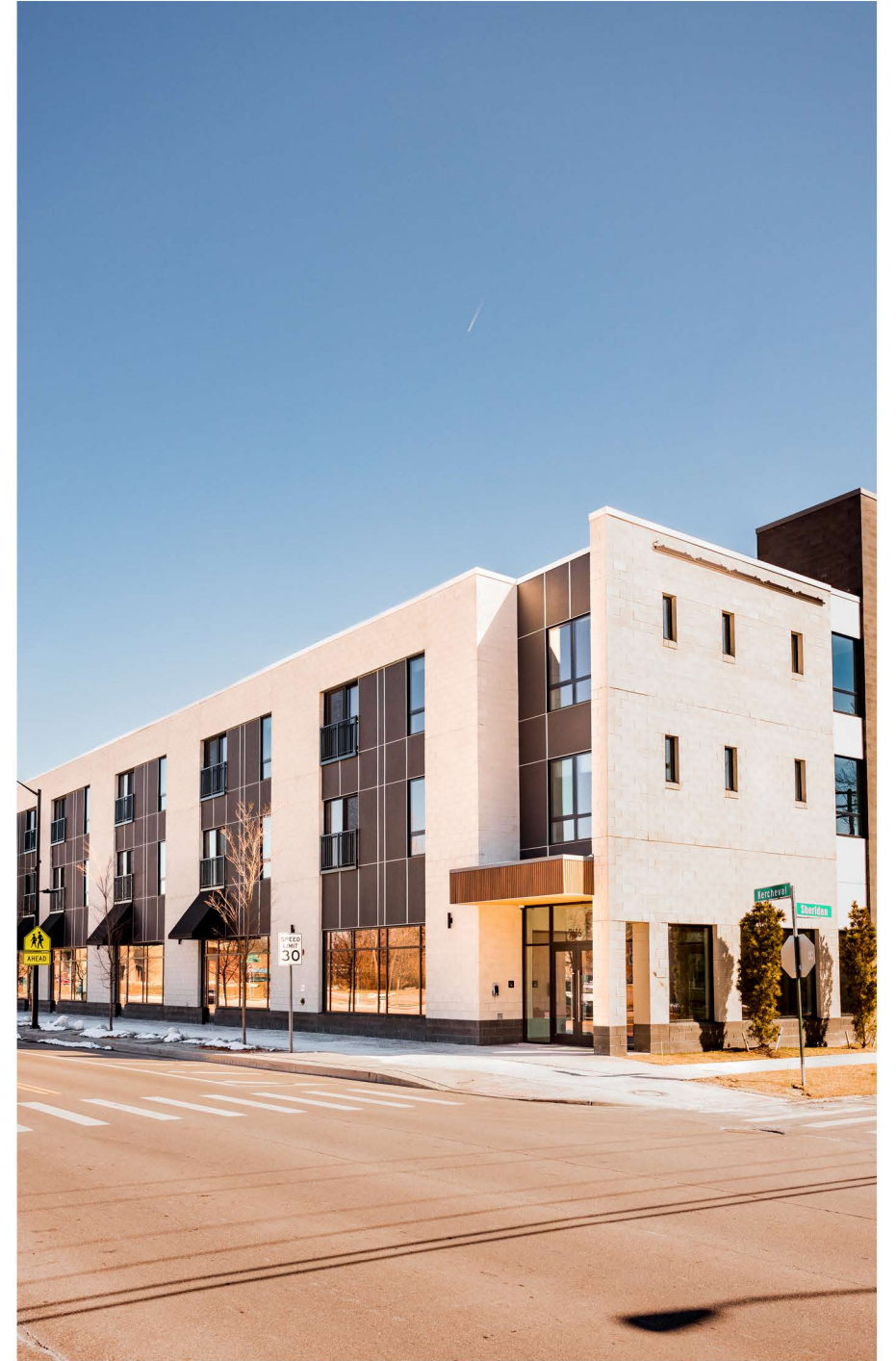
THE TOWNSEND

7410 KERCHEVAL AVE
ISLANDVIEW

FEATURES

- New Construction
- Large Storefront Windows
- Dual Entrance from Kercheval and Private Parking
- Onsite Parking and Non Metered Street Parking









The Jeffersonian →

Belle Isle →

Indian Village →

Sister Pie →

← Marrow

West Village →

← Eugenie,
Red Hook,
YumVillage,
Metropolitan
Bar + Kitchen

← Saint
Charles
Residences
and Terraces

Butzel Playground →

7410
Kercheval →
1,200-9,000 RSF
Available

← Onsite Parking

Future Development →

A TRUSTED AND RESPECTED
MEMBER OF THE COMMUNITY,
O'CONNOR REAL ESTATE
BRINGS 20 YEARS OF
EXPERIENCE AND EXPERTISE
TO THE COMMERCIAL OFFICE
AND RETAIL MARKET.

For more information about the retail spaces
available at The Townsend,
please contact O'Connor Real Estate

Vincent Mazzola
+ 313 704 2678
vincent@oconnordetroit.com

Melissa Price
+ 313 421 1557
melissa@oconnordetroit.com

O'Connor Real Estate

THE DEVELOPER



BANYAN INVESTMENTS
www.banyandirect.com

The information used in this marketing material was taken from sources believed to be reliable. O'Connor Real Estate makes no representation, warranty, or endorsement made as to the accuracy, reliability, adequacy, or completeness of any information or analysis contained herein and disclaims any and all liability that may be based on such information, errors therein or omissions therefrom. You and your advisors should conduct a careful and independent investigation of the property to determine your satisfaction with the suitability of the property for your needs.