



NEIGHBORHOOD

EASTERN MARKET

LOCATION

**LOCATED ON DIVISION BETWEEN
ORLEANS AND ST AUBIN**

SPACE TYPE

RETAIL

1948 Division Street retail is located in Eastern Market, starting at 1,621 square feet. This historic redevelopment has attracted creative office and retail tenants such as Anthology Coffee, Floyd modern furniture and architectural firm M1DTW. Located just steps from the Dequindre Cut and offers outdoor common space for activation.

ASKING RENT

\$16/SF NNN

NEIGHBORS

Eastern Market, Supino Pizza, Trinosophes, People's Records, Vivio's Food & Spirits, Detroit City Distillery, Cairo Coffee, Motown Bisto, Bert's Marketplace, Detroit Hustles Harder, Eastern Market Brewing, Bea's Detroit, Germack, Beyond Juicery, Collect Beer Bar, Bunny Bunny.

JOIN TENANTS

Floyd, Anthology Coffee, and M1DTW Architects

SIZE

1,621 & 2,482 Square feet

ONSITE PARKING

Yes

CEILING HEIGHTS

12'

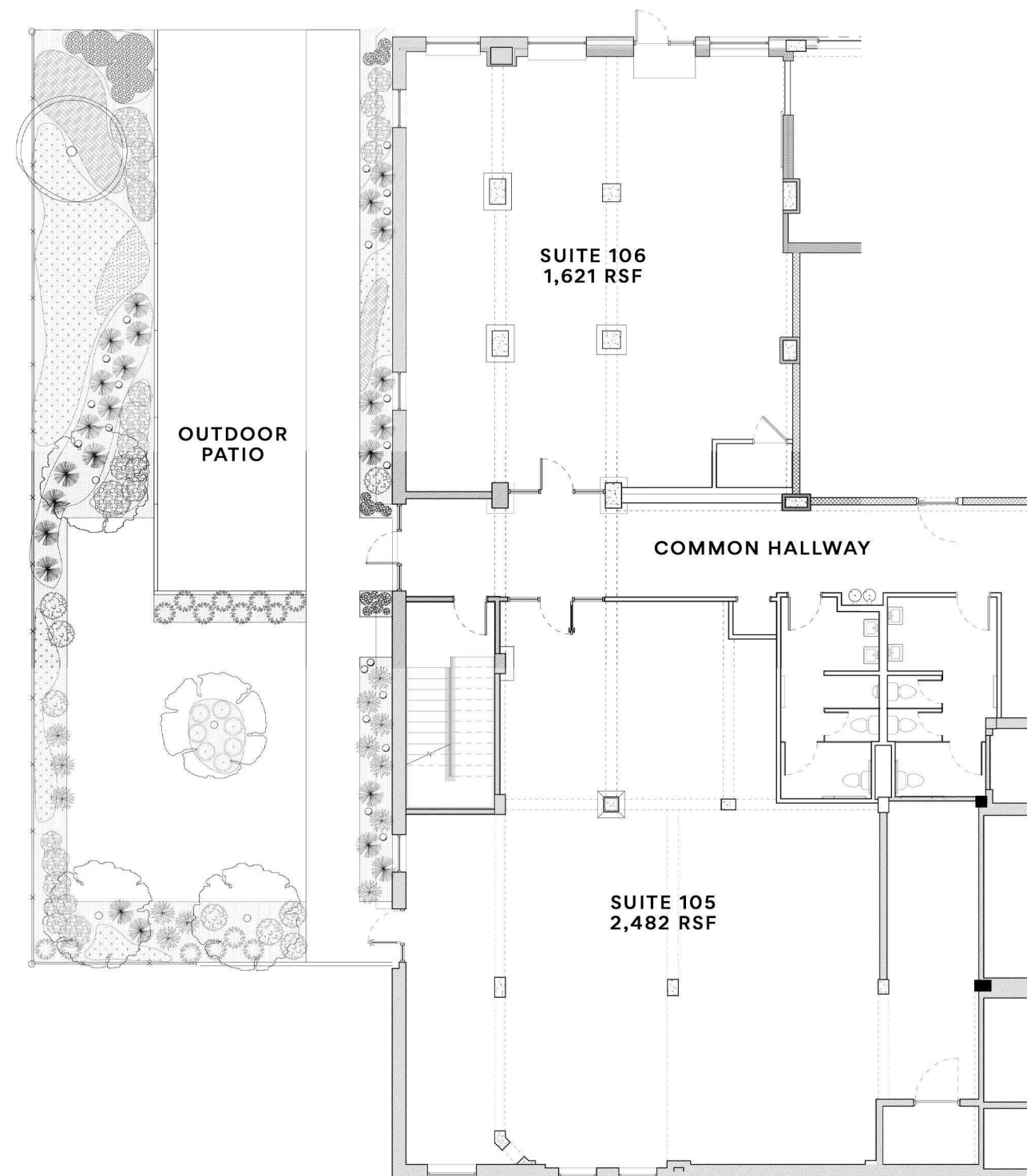
1948

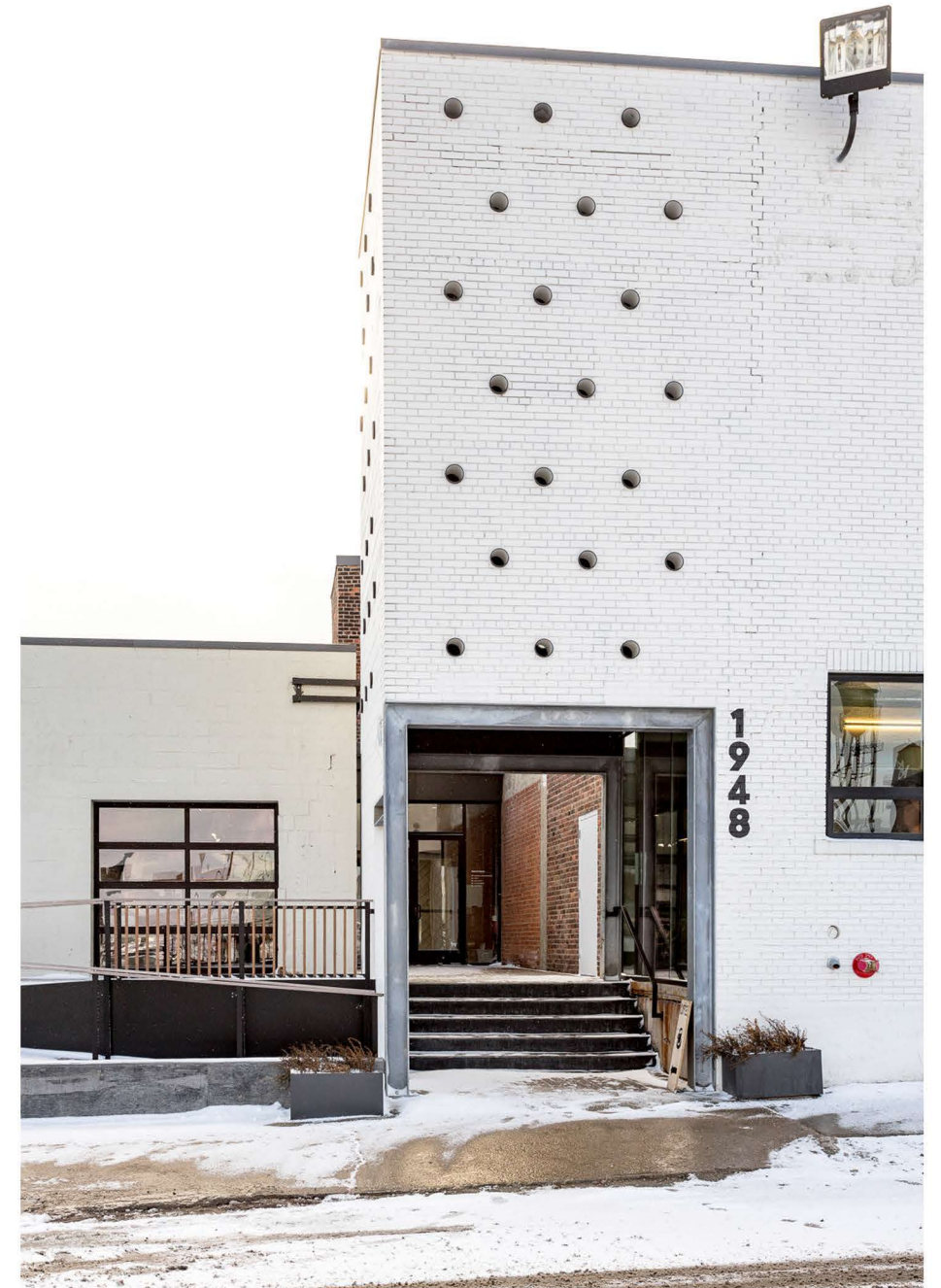
DIVISION STREET

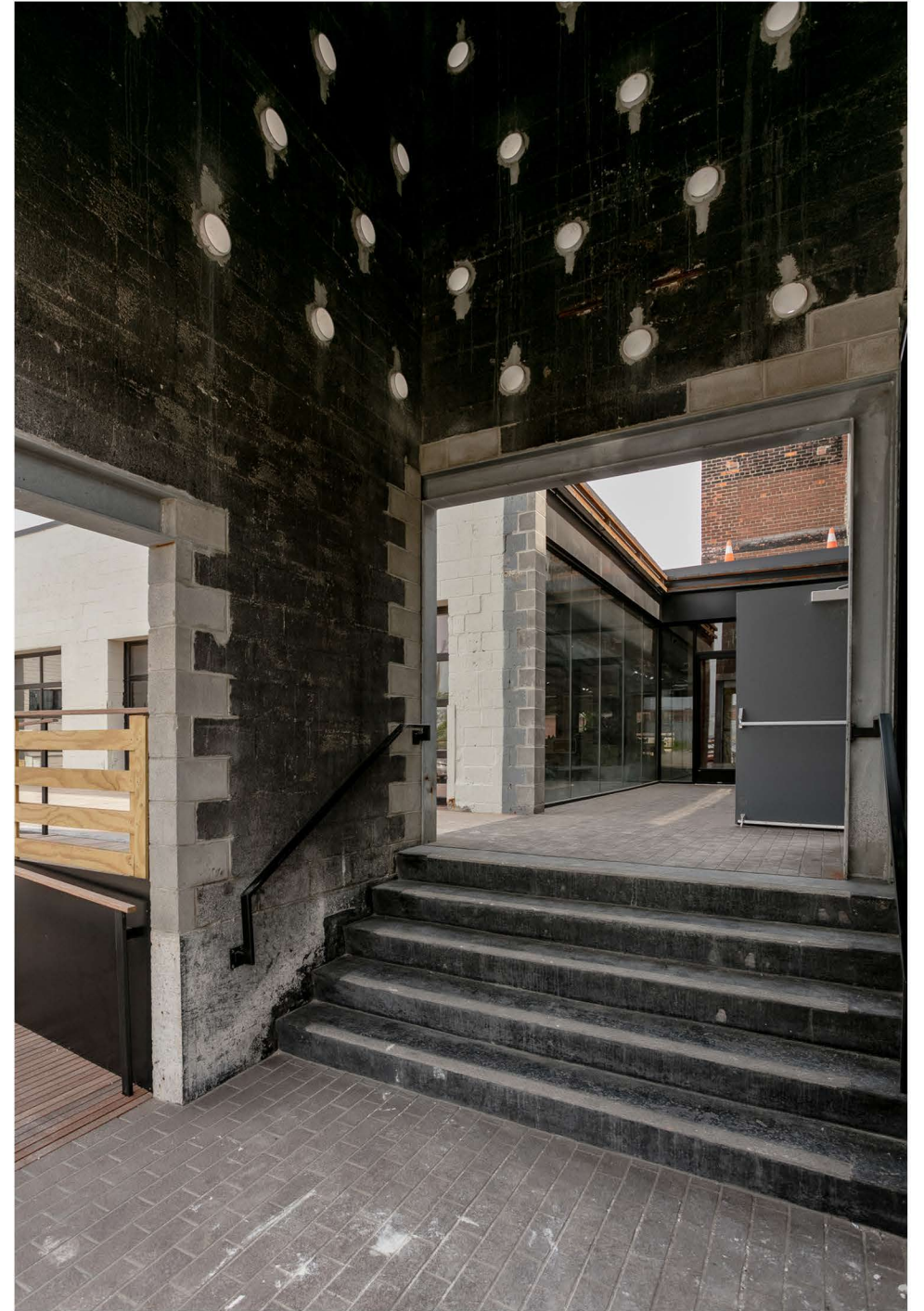
Eastern Market

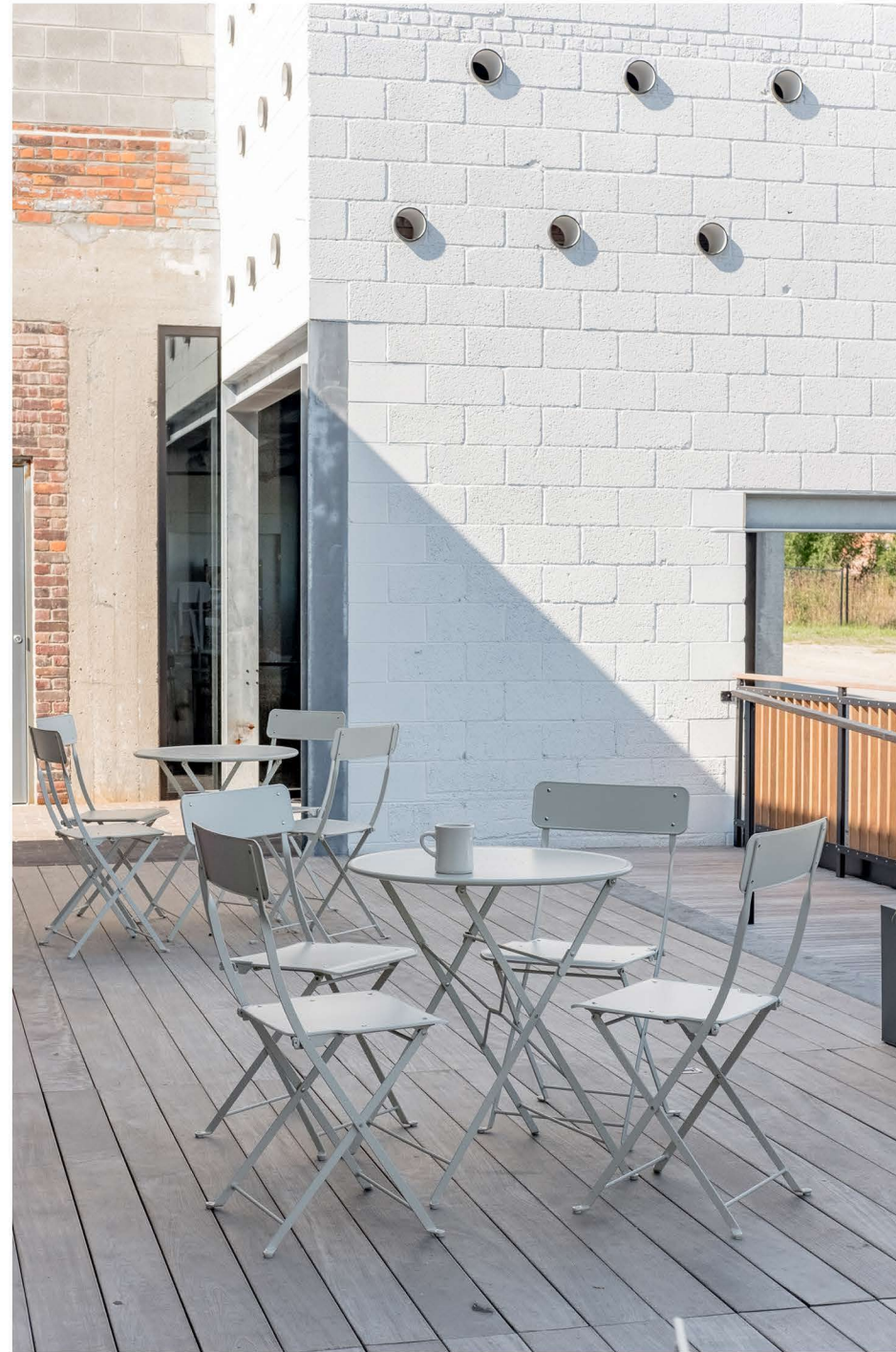
FEATURES

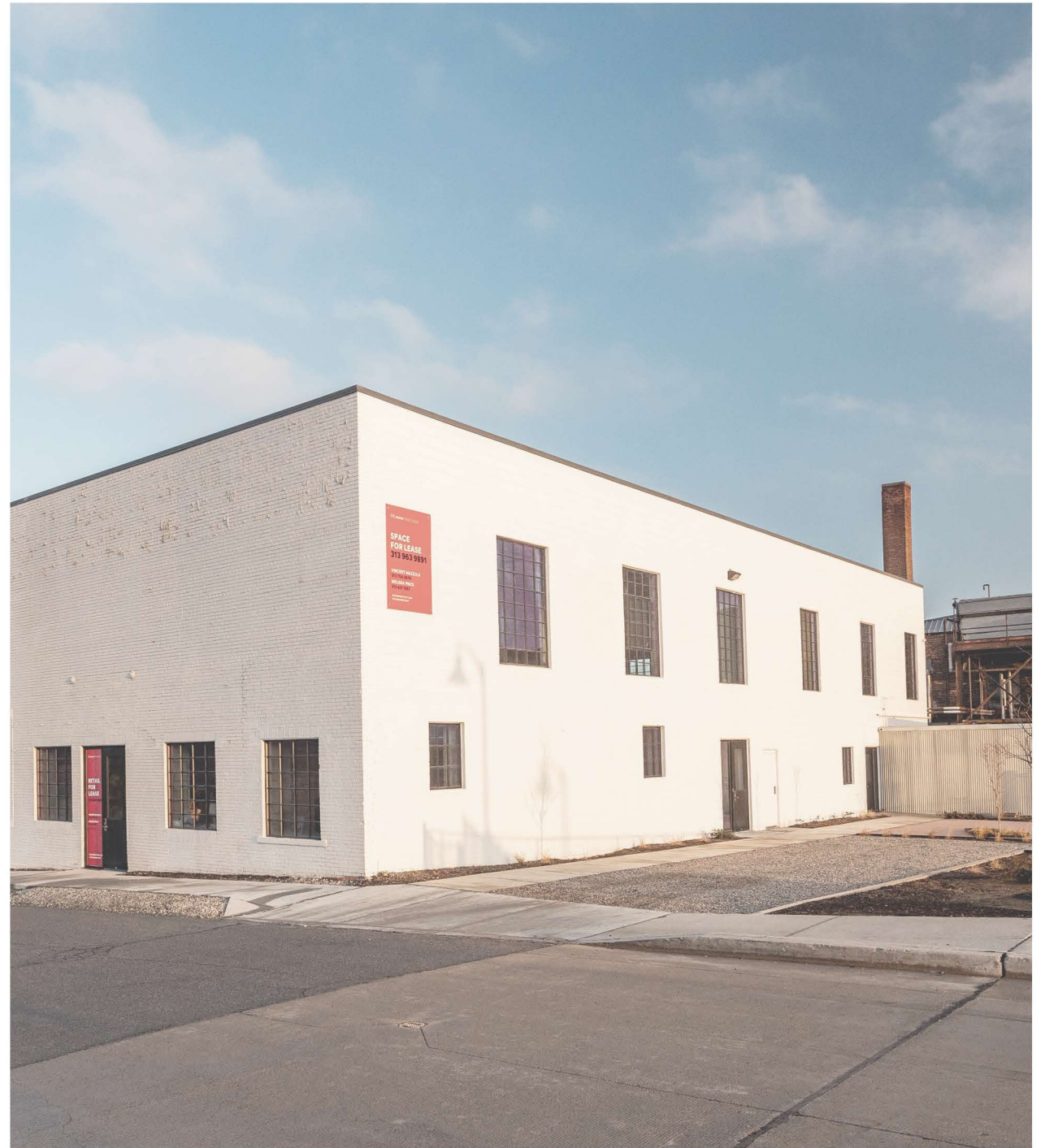
- 1,621 & 2,482 SF Suites Available
- Up to 3,644 Square Feet Combined
- Suited for Restaurant Use
- Option to Activate Outdoor Patio on the Dequindre Cut
- Onsite Parking













← Lafayette park

← Downtown

Eastern Market Sheds →

← Gratiot Ave

**1948
Division**

← Dequindre Cut

← Anthology Coffee

1,621 & 2,482 SF
Available

← Floyd

Onsite Parking →

A TRUSTED AND RESPECTED
MEMBER OF THE COMMUNITY,
O'CONNOR REAL ESTATE
BRINGS 20 YEARS OF
EXPERIENCE AND EXPERTISE
TO THE COMMERCIAL OFFICE
AND RETAIL MARKET.

For more information about the spaces
available at 1948 Division,
please contact O'Connor Real Estate

Vincent Mazzola

+ 313 704 2678

vincent@oconnordetroit.com

Melissa Price

+ 313 421 1557

melissa@oconnordetroit.com

O'Connor Real Estate

The information used in this marketing material was taken from sources believed to be reliable. O'Connor Real Estate makes no representation, warranty, or endorsement made as to the accuracy, reliability, adequacy, or completeness of any information or analysis contained herein and disclaims any and all liability that may be based on such information, errors therein or omissions therefrom. You and your advisors should conduct a careful and independent investigation of the property to determine your satisfaction with the suitability of the property for your needs.