



NEIGHBORHOOD

**CORKTOWN**

LOCATION

**SE CORNER OF TRUMBULL  
AND ELIZABETH**

SPACE TYPE

**RETAIL**

2100 Trumbull Street, an Elton Park Development, offers 1,161 square feet of retail at the epicenter of growth. Built for a single tenant ready to serve the busy, walkable Corktown neighborhood.

ASKING RENT

---

**\$32 PER RSF / NNN**

NEIGHBORS

---

Momento Gelato and Coffee, Rhythm & Blue Juice Co., Hudson Styling Co, Ford Motor Company, Michigan & Trumbull, George Gregory, James Oliver, Mudgie's, Ottawa Via, Folk McShane's Irish Pub, Ima, Slows BBQ, Batch Brewery, Nimo's Mink, Motor City Wine, Spectacle Society, Detroit Dye House, Chase Bank, Corktown Apothecary, and many others.

SIZE

---

**1,161 RSF**

FRONTAGE

---

**61' ON ELIZABETH**

CEILING HEIGHTS

---

**14'**

# 2100

## TRUMBULL STREET

Corktown

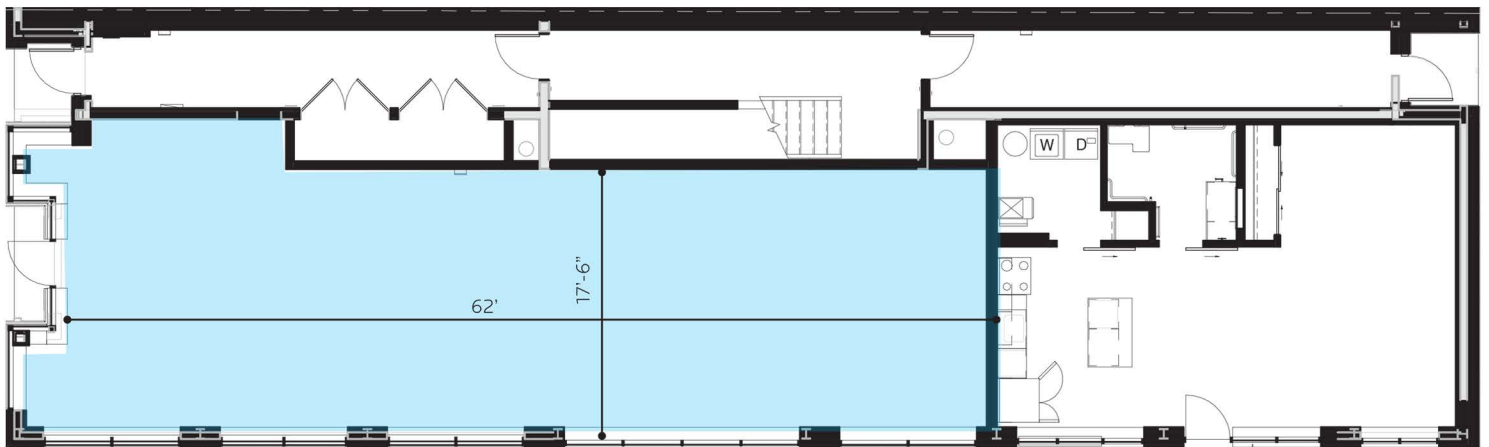
### FEATURES

1,161 Square Feet

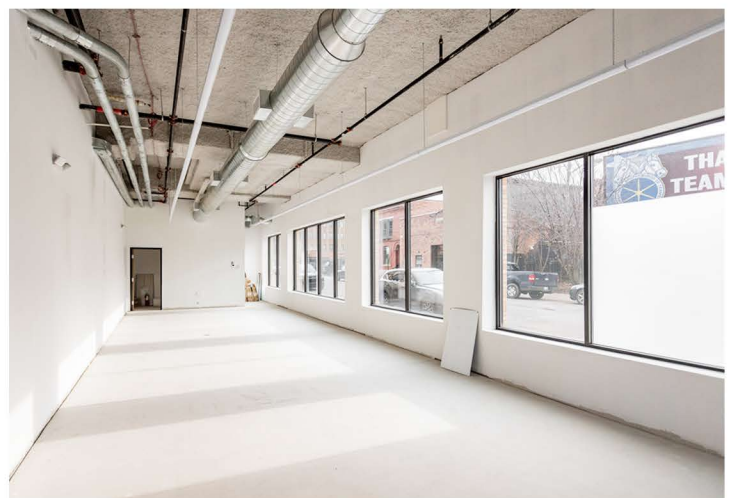
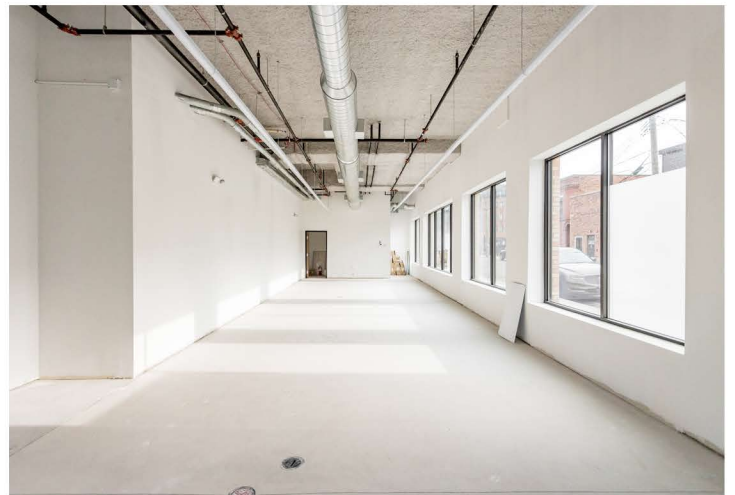
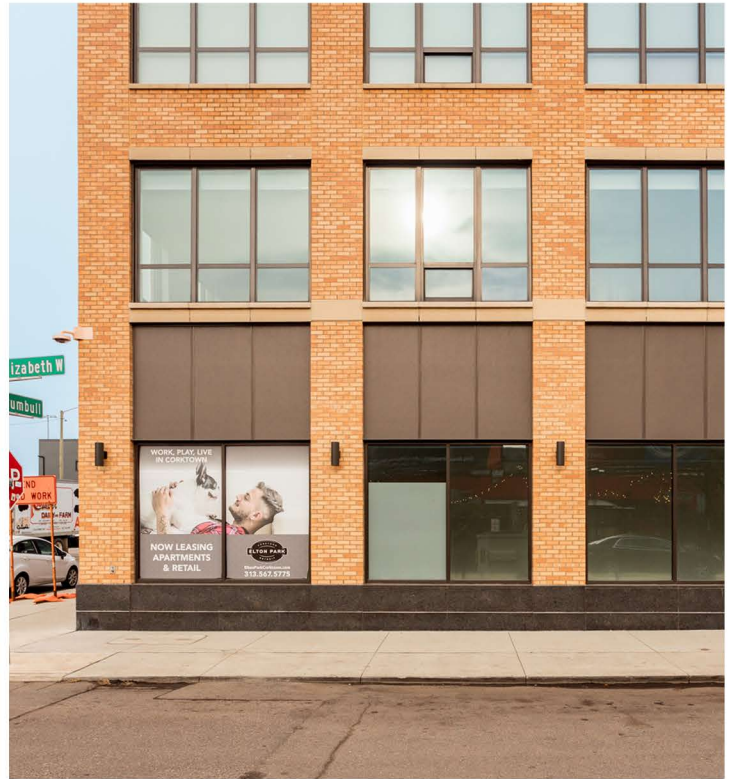
Prime Retail Frontage on  
Trumbull Street

Whitebox Ready with Toilet Room  
and Utility Closet

Floor to Ceiling Windows Running  
the Length of the Suite











Ford's Michigan Central →

Ford's Book Depository →

← Rocket Data Center

← The Perennial

**2100  
Trumbull  
Street**

1,161  
RSF Available

← The Corner

← 2120 Trumbull

← The Godfrey Hotel

Checker Building →

The Robertson →

← The Crawford

← 8th Street Row



# A TRUSTED AND RESPECTED MEMBER OF THE COMMUNITY, O'CONNOR REAL ESTATE BRINGS 20 YEARS OF EXPERIENCE AND EXPERTISE TO THE COMMERCIAL OFFICE AND RETAIL MARKET.

For more information about the retail space  
available at 2100 Trumbull,  
please contact O'Connor Real Estate

**Vincent Mazzola**

**+ 313 704 2678**

**[vincent@oconnordetroit.com](mailto:vincent@oconnordetroit.com)**

**Melissa Price**

**+ 313 421 1557**

**[melissa@oconnordetroit.com](mailto:melissa@oconnordetroit.com)**

**O'Connor Real Estate**

The information used in this marketing material was taken from sources believed to be reliable. O'Connor Real Estate makes no representation, warranty, or endorsement made as to the accuracy, reliability, adequacy, or completeness of any information or analysis contained herein and disclaims any and all liability that may be based on such information, errors therein or omissions therefrom. You and your advisors should conduct a careful and independent investigation of the property to determine your satisfaction with the suitability of the property for your needs.