

2100 TRUMBULL

oconnordetroit.com/2100Trumbull



NEIGHBORHOOD

CORKTOWN

LOCATION

**SE CORNER OF TRUMBULL
AND ELIZABETH**

SPACE TYPE

RETAIL

2100 Trumbull Street, an Elton Park Development, offers 1,161 square feet of retail at the epicenter of growth. Built for a single tenant ready to serve the busy, walkable Corktown neighborhood.

ASKING RENT

\$32 PER RSF / NNN

NEIGHBORS

Momento Gelato and Coffee, Rhythm & Blue Juice Co., Hudson Styling Co, Ford Motor Company, Michigan & Trumbull, George Gregory, James Oliver, Mudgie's, Ottawa Via, Folk McShane's Irish Pub, Ima, Slows BBQ, Batch Brewery, Nimo's Mink, Motor City Wine, Spectacle Society, Detroit Dye House, Chase Bank, Corktown Apothecary, and many others.

SIZE

1,161 RSF

FRONTAGE

61' ON ELIZABETH

CEILING HEIGHTS

14'

2100

TRUMBULL STREET

Corktown

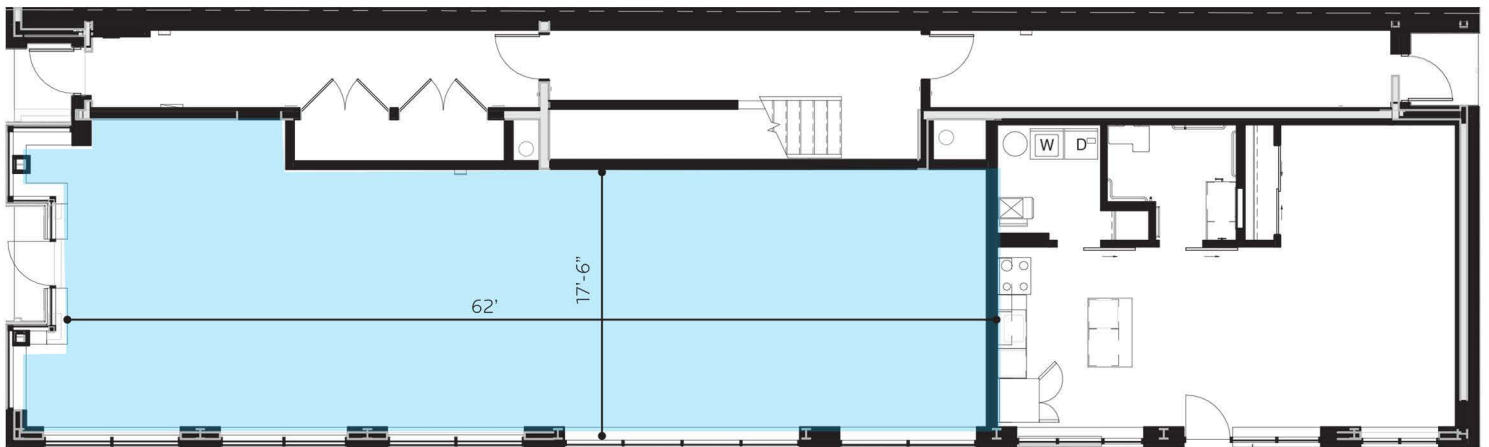
FEATURES

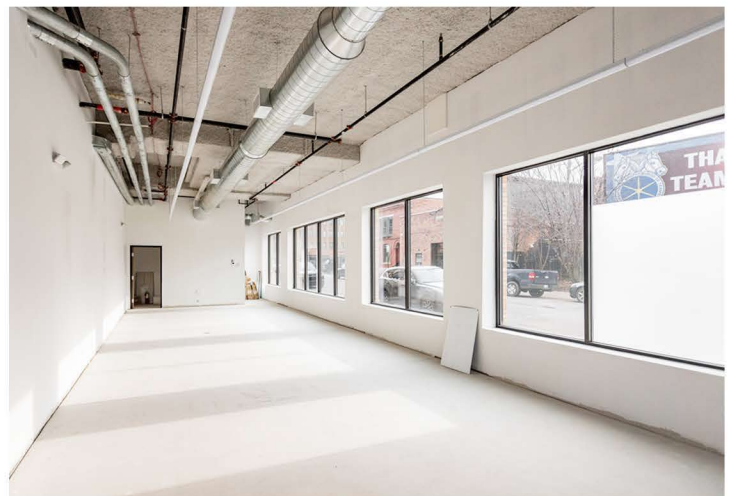
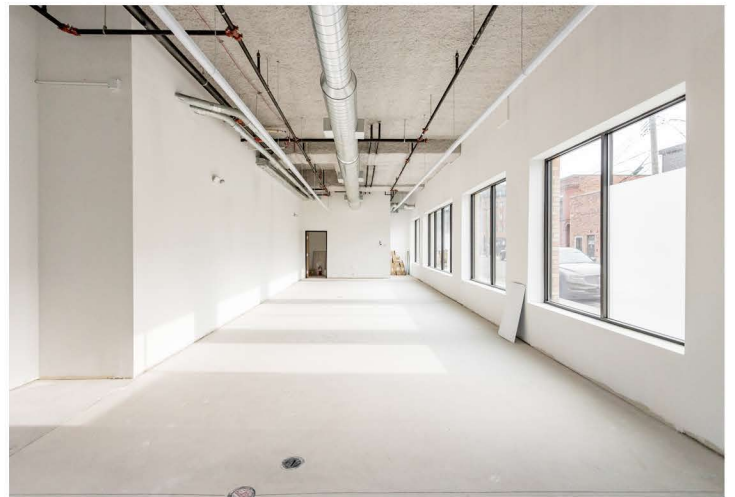
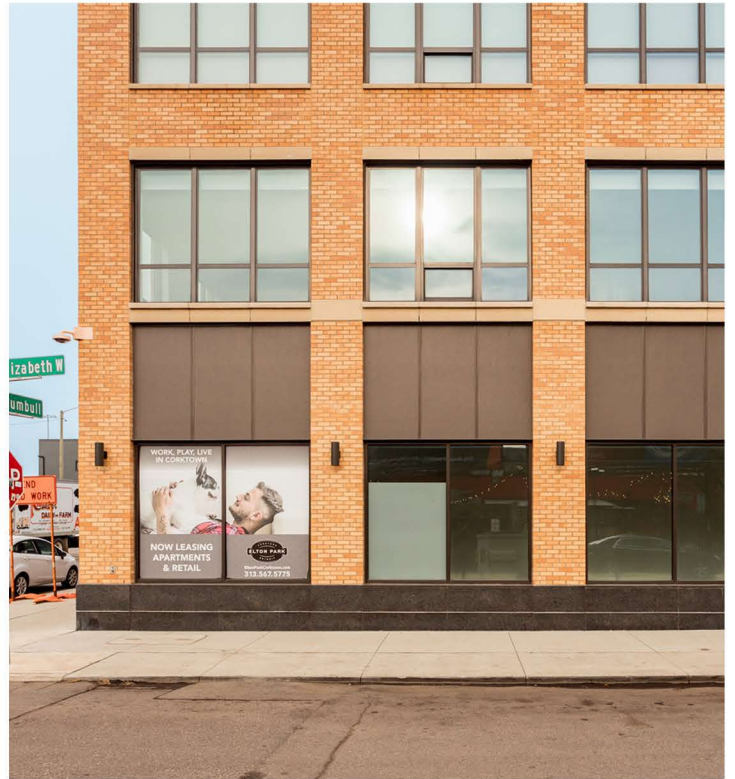
1,161 Square Feet

Prime Retail Frontage on
Trumbull Street

Whitebox Ready with Toilet Room
and Utility Closet

Floor to Ceiling Windows Running
the Length of the Suite







Ford's Michigan Central →

Ford's Book Depository →

← Rocket Data Center

← The Perennial

**2100
Trumbull
Street**
1,161
RSF Available

← The Corner

← 2120 Trumbull

← The Godfrey Hotel

Checker Building →

The Robertson →

← The Crawford

← 8th Street Row

A TRUSTED AND RESPECTED
MEMBER OF THE COMMUNITY,
O'CONNOR REAL ESTATE
BRINGS 20 YEARS OF
EXPERIENCE AND EXPERTISE
TO THE COMMERCIAL OFFICE
AND RETAIL MARKET.

For more information about the retail space
available at 2100 Trumbull,
please contact O'Connor Real Estate

Vincent Mazzola

+ 313 704 2678

vincent@oconnordetroit.com

O'Connor Real Estate

The information used in this marketing material was taken from sources believed to be reliable. O'Connor Real Estate makes no representation, warranty, or endorsement made as to the accuracy, reliability, adequacy, or completeness of any information or analysis contained herein and disclaims any and all liability that may be based on such information, errors therein or omissions therefrom. You and your advisors should conduct a careful and independent investigation of the property to determine your satisfaction with the suitability of the property for your needs.