

the
coachman

new luxury in old corktown

contents

intro	4
floorplans	
- penthouse	8
- bagley two bedroom	18
- bagley one bedroom	30
- carriage home	38
site plan	46
amenities	54
corktown	58
team	64





The newest and boldest contribution
in the heart of Detroit's
historic Corktown neighborhood,

The Coachman

Built along the former Baker Streetcar line,
The Coachman embodies a vision for modern chic
residences that infuse history, luxury, and design.

A compelling new development emerges in
the form of 22 stunning condominiums.

The Coachman residents enjoy open-plan
living spaces featuring luxurious ensuites;
modern black kitchens; private gardens and
terraces; off-street secure parking; expansive
windows that maximize light and dramatize
vertical space. Crafted with a selection of
bespoke finishes, The Coachman spaces are
available in four unique floor plans,
including single-level, multi-level, and
carriage home layouts.

Engaging Detroit's home buyer,
The Coachman is a new angle on Corktown living.







two bedroom

two-story penthouse



This multi-level layout is a perfect balance of a luxurious condo lifestyle and relaxed single family living with private garage parking. A great entertaining space, the main floor is anchored with a large bright white island and bookended with the living and dining areas, featuring a built-in bar/serving station, an 11-foot sliding terrace wall, and exposed ductwork. A custom slatted black accent wall brings a unique light-filtering perspective to the upper floors, including a private roof terrace with panoramic city views. Two luxurious ensuites are finished with matte black fixtures and contrasting white and black tilework. The primary suite features a dual vanity and 11-foot sliding terrace wall.





two bedroom

two-story penthouse

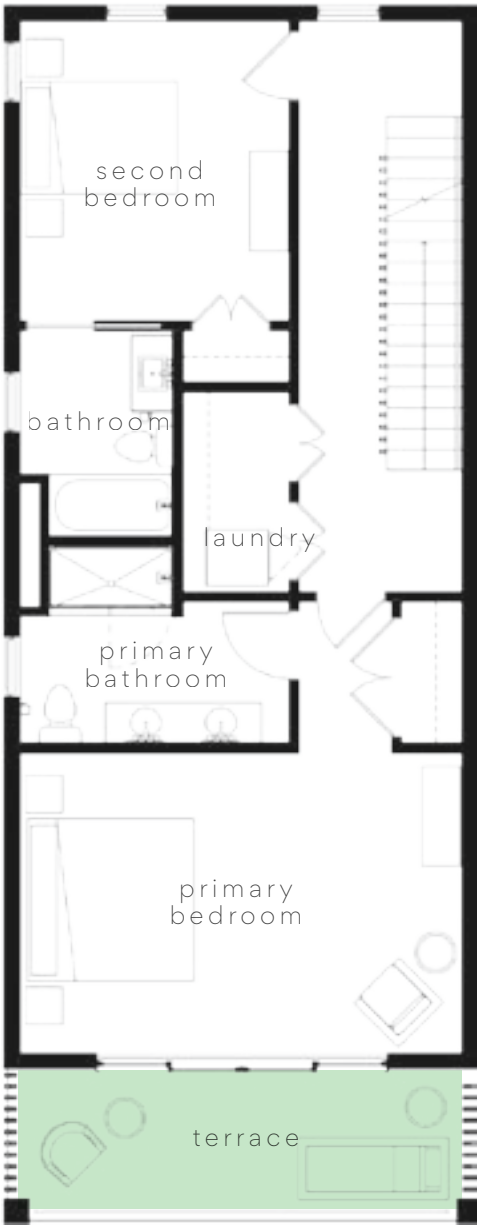
- 2 bedrooms
- 2.5 bathrooms
- 1,400-1,500 sq ft (interior)
- 600 sq ft (exterior)

- Large kitchen islands
- Dark quartz countertops
- Built-in bar & serving station
 - with oak butcher block countertop
- Eclipse European-style wood cabinetry
- Blum kitchen hardware
- GE energy star black stainless appliances
 - with induction rangetop
- Single-handle pull down kitchen faucets
- Stainless steel undermount sink
- Aluminum-clad Windsor Windows
 - with Low-E insulated glazing
- Primary en-suite with dual vanity
- Toto toilets and floating vanities
- Custom slatted black accent wall
- Engineered oak wide-plank flooring
- Two 11' sliding terrace walls
- Panoramic skyline views
- Guest en-suite
- Energy efficient HVAC systems
- 9'+ ceilings
- Private rooftop terrace
- Garage parking

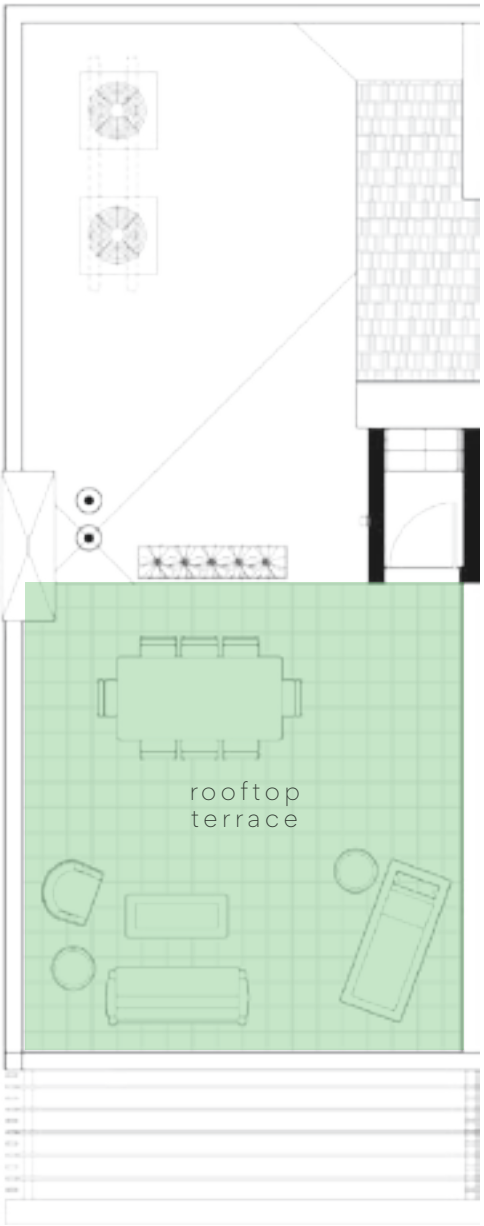
main floor



upper floor



rooftop



first floor



upper floors







two bedroom
w/ private grass patio



Designed with flexibility in mind and with access through your private grass patio, the open layout is sure to stimulate your “interior designer” senses. The interior has an open kitchen overlooking the living and dining area, and finished with black wood cabinetry, dark quartz countertops, Blum hardware, bright white primary en-suites, private grass patio spaces, and garage parking.







two bedroom

w/ private grass patio

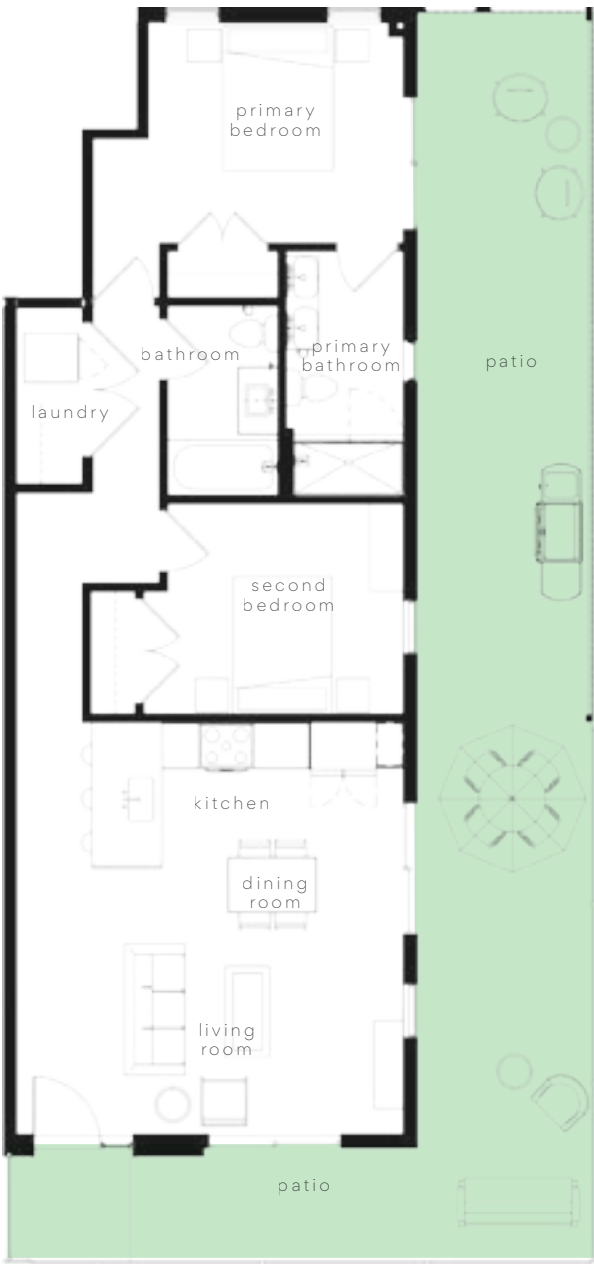
2 bedrooms

2 bathrooms

875 sq ft (interior)

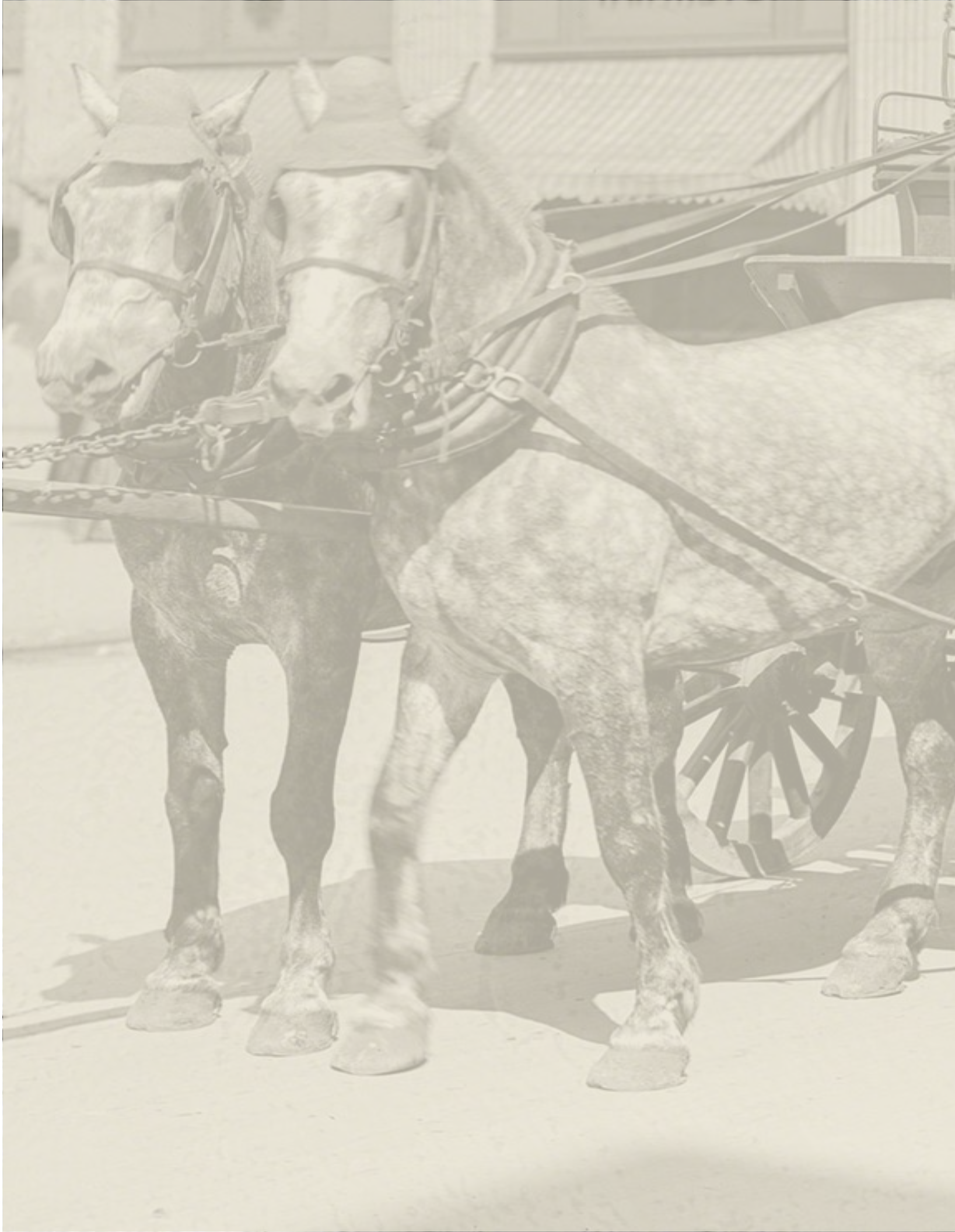
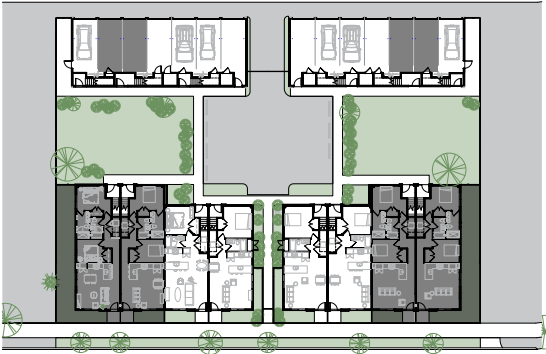
150-450 sq ft (exterior)

- Engineered oak wide-plank flooring
- Quartz countertops
- Primary en-suite with dual vanity
- Eclipse European-style wood cabinetry
- Blum kitchen hardware
- GE energy star black stainless appliances with induction rangetop
- Toto toilets and floating vanities
- Energy efficient HVAC systems
- Single-handle pull down kitchen faucets
- Stainless steel undermount sink
- Aluminum-clad Windsor Windows with Low-E insulated glazing
- Sliding patio doors
- 9'+ ceilings
- Fenced patio spaces
- Garage parking



first floor

upper floors







one bedroom
w/ private grass patio



Generous ceiling heights, wide-plank engineered oak flooring, and a contrasting black modern kitchen, make this open floor plan perfect for that on-the-go urban dweller who enjoys all the perks and conveniences of living in the city. Finishes include matte black fixtures throughout, dark quartz countertops, floating bathroom vanities with Toto toilets, GE energy start black stainless appliances, private grass patio, and gated parking.

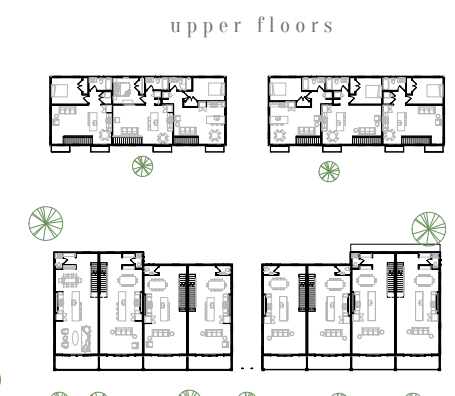




one bedroom
w/ private grass patio

1 bedroom
1 bathroom
715 sq ft (interior)
150-300 sq ft (exterior)

- Engineered oak wide-plank flooring
- Quartz countertops
- Eclipse European-style wood cabinetry
- Blum kitchen hardware
- GE energy star black stainless appliances with induction rangetop
- Toto toilets and floating vanities
- Energy efficient HVAC systems
- Single-handle pull down kitchen faucets
- Stainless steel undermount sink
- Aluminum-clad Windsor Windows with Low-E insulated glazing
- Sliding patio doors
- 9'+ ceilings
- Fenced patio spaces
- Gated parking





one bedroom
carriage house



Accessed through your lush green courtyard, The Coachman carriage home model is packed with a fresh modern design. Light oak engineered flooring is a bright backdrop against the black finishes and fixtures throughout. A bright white kitchen island takes center stage with a sliding juliette balcony overlooking the courtyard, with secure gated and garage parking.







one bedroom

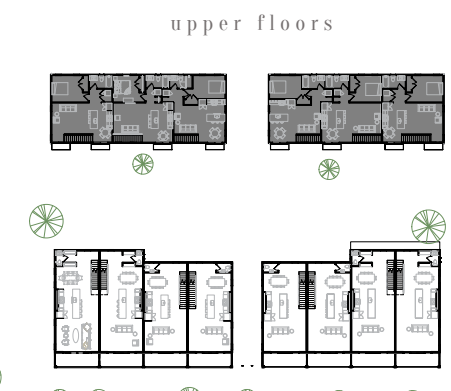
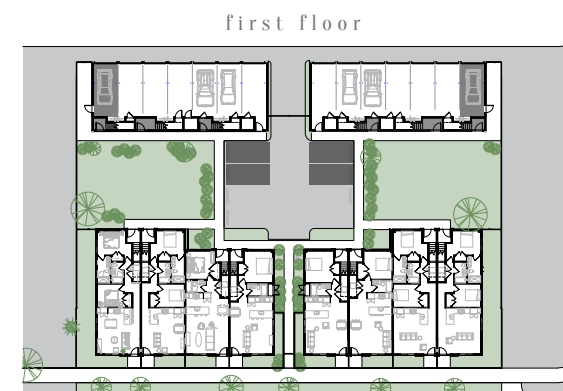
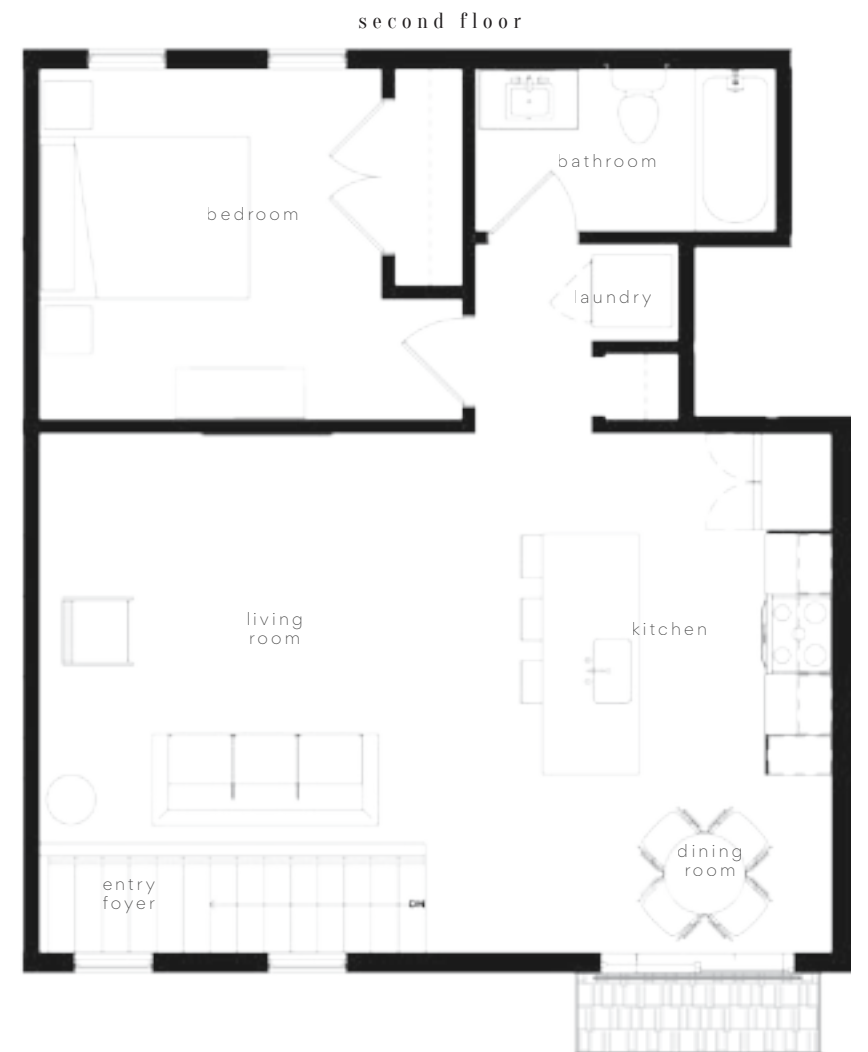
carriage house

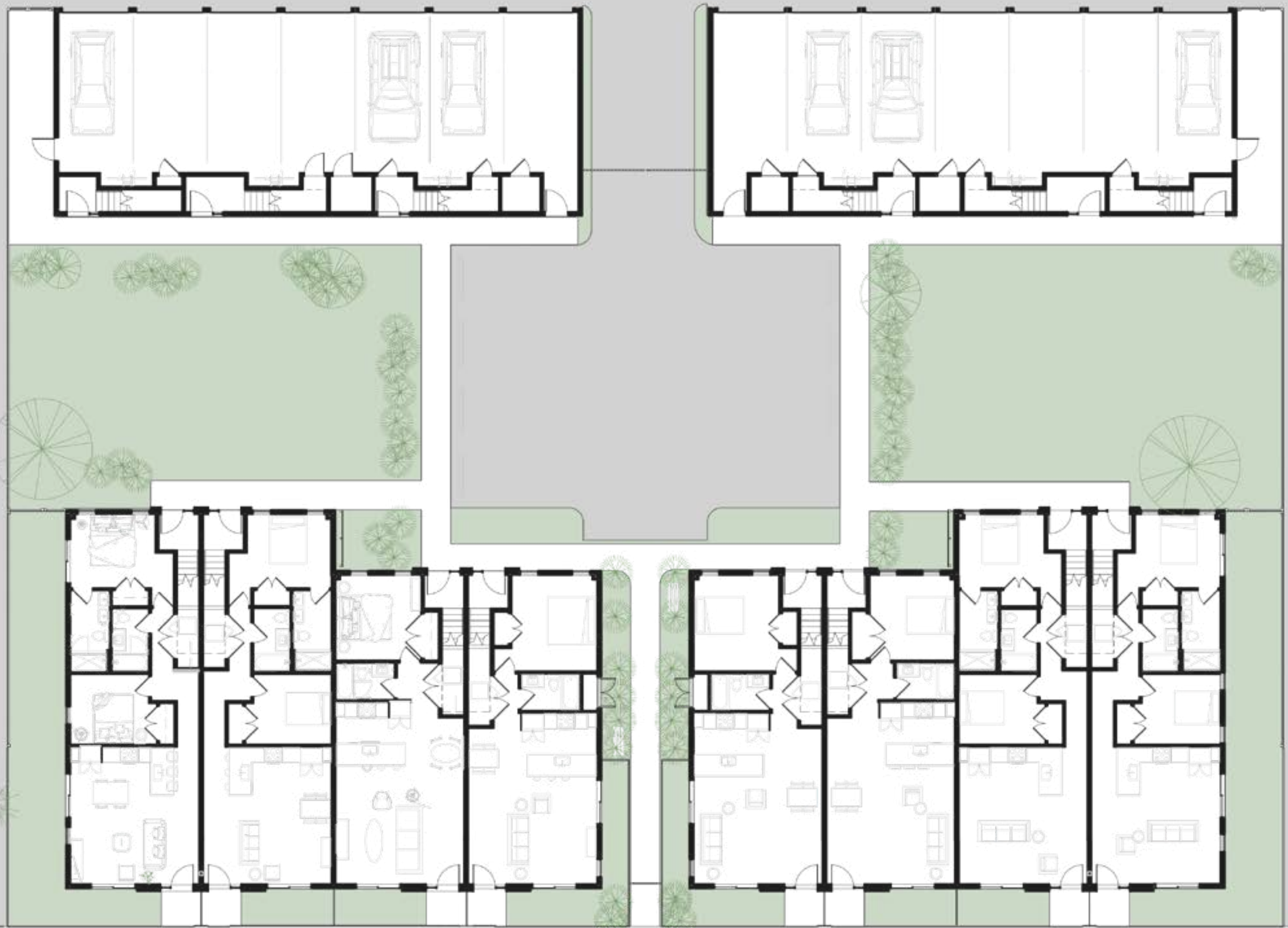
1 bedroom

1 bathroom

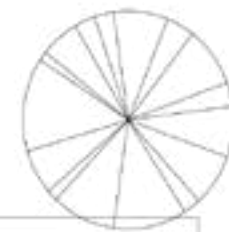
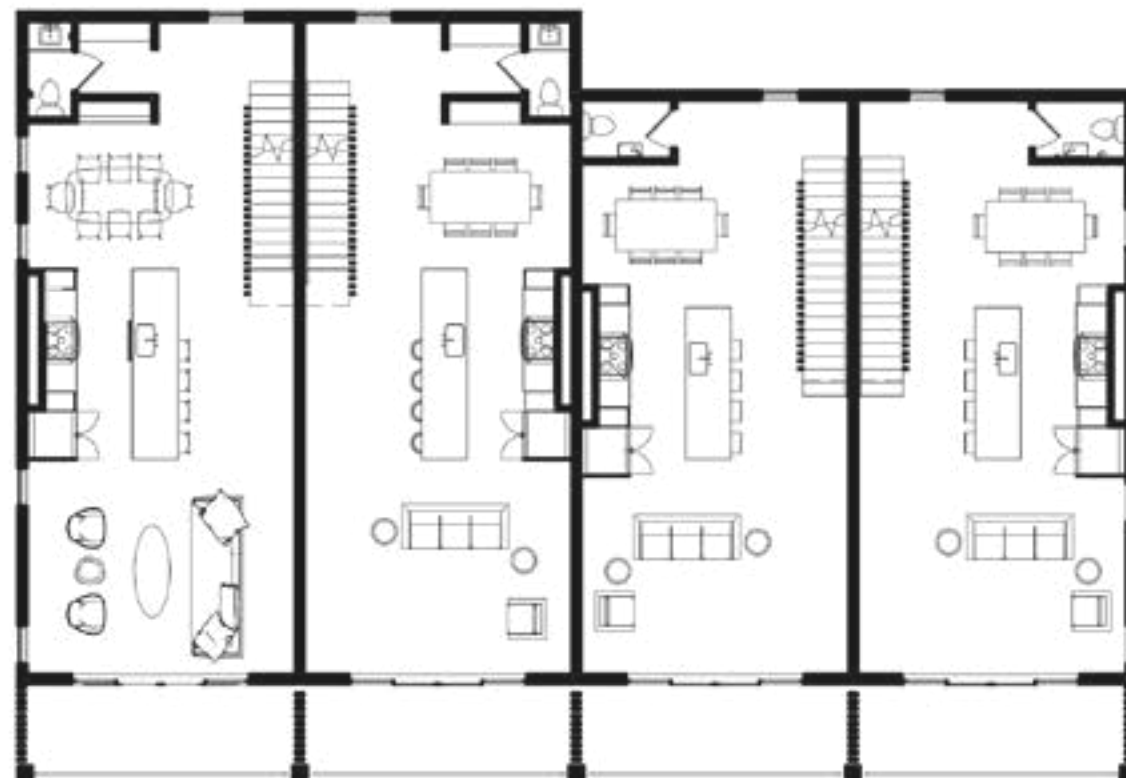
750-820 sq ft

- Juliette style patio doors
- Matte black fixtures
- Engineered oak wide-plank flooring
- Quartz countertops
- Eclipse European-style wood cabinetry
- Blum kitchen hardware
- GE energy star black stainless appliances with induction rangetop
- Toto toilets and floating vanities
- Energy efficient HVAC systems
- Single-handle pull down kitchen faucets
- Stainless steel undermount sink
- Slatted black accent wall
- Aluminum-clad Windsor Windows with Low-E insulated glazing
- Gated and garage parking

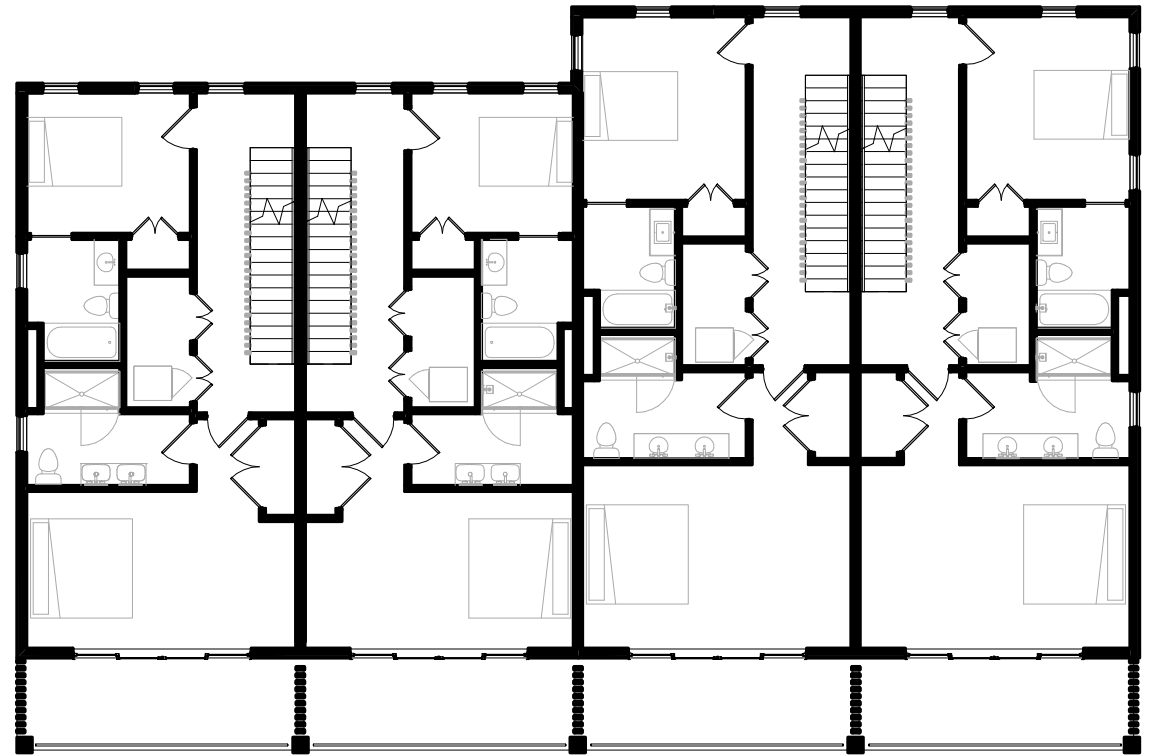
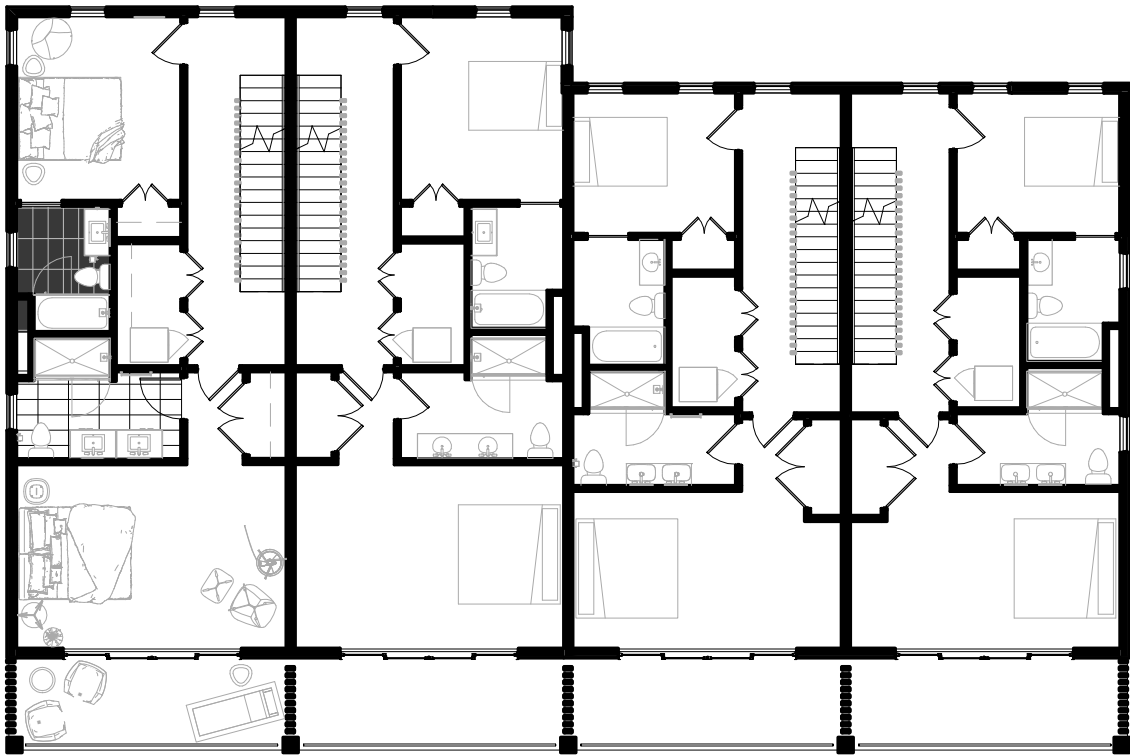
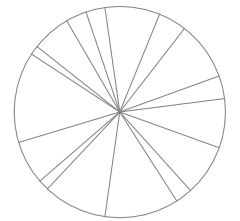
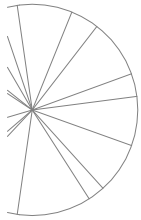
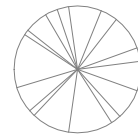
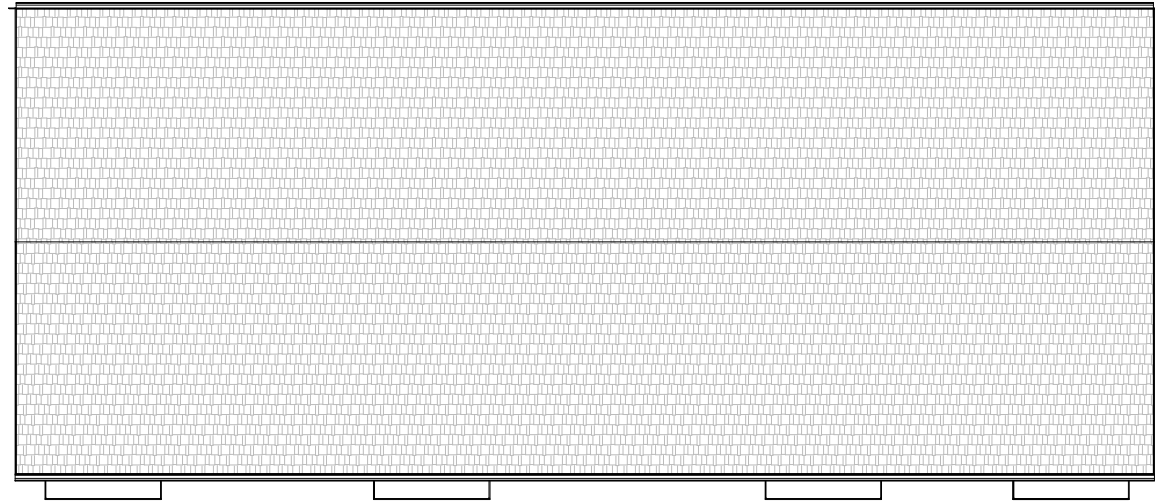
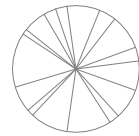
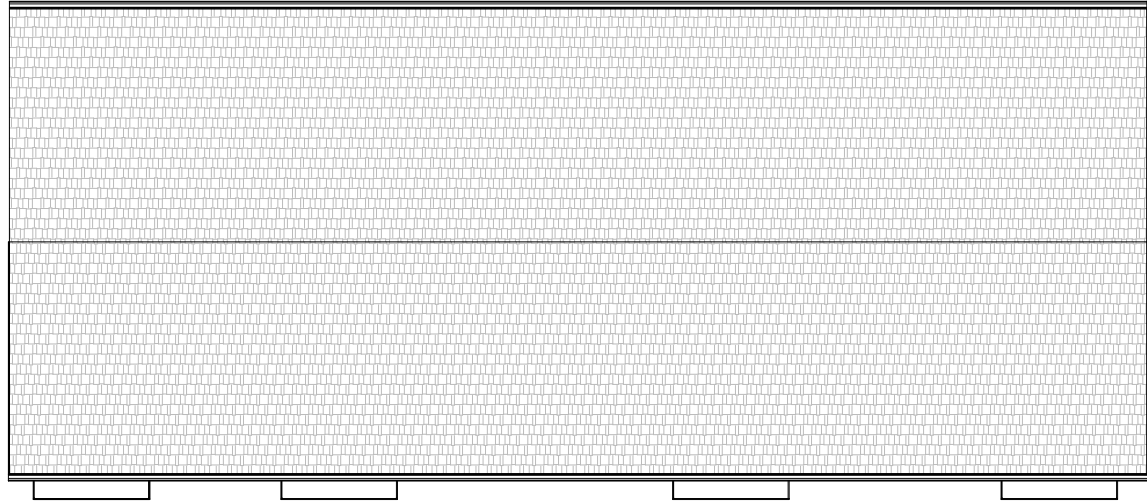




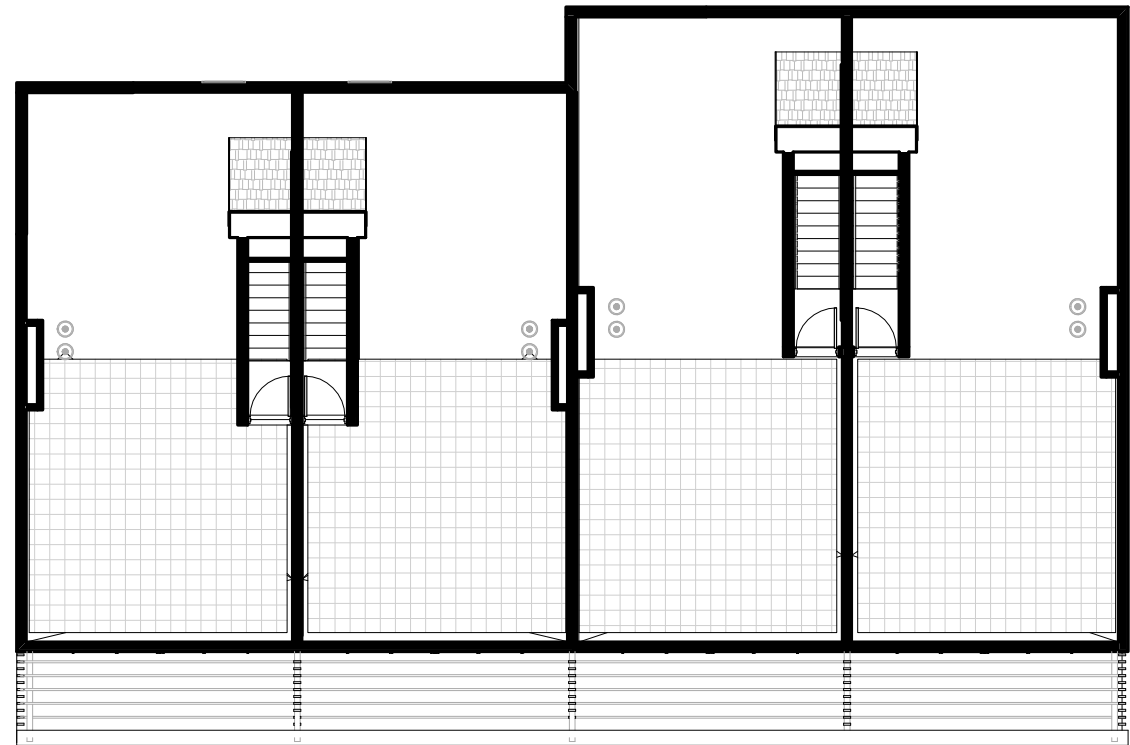
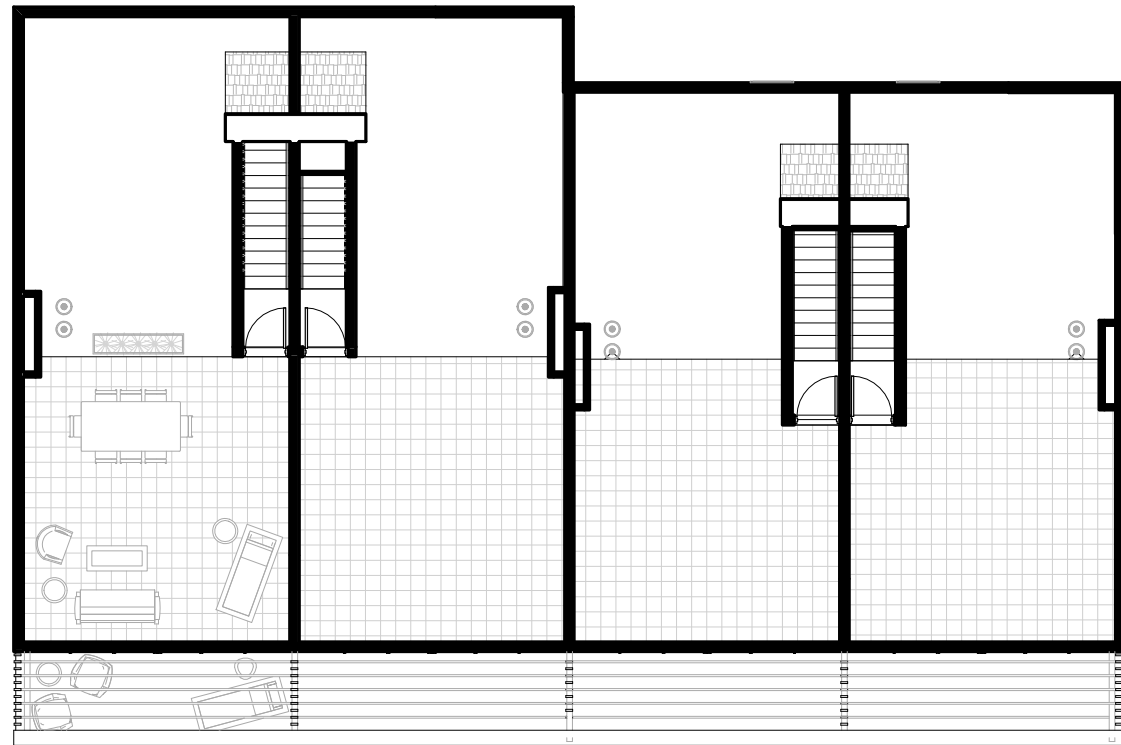
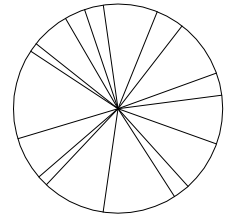
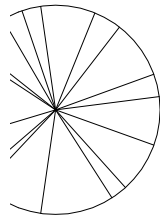
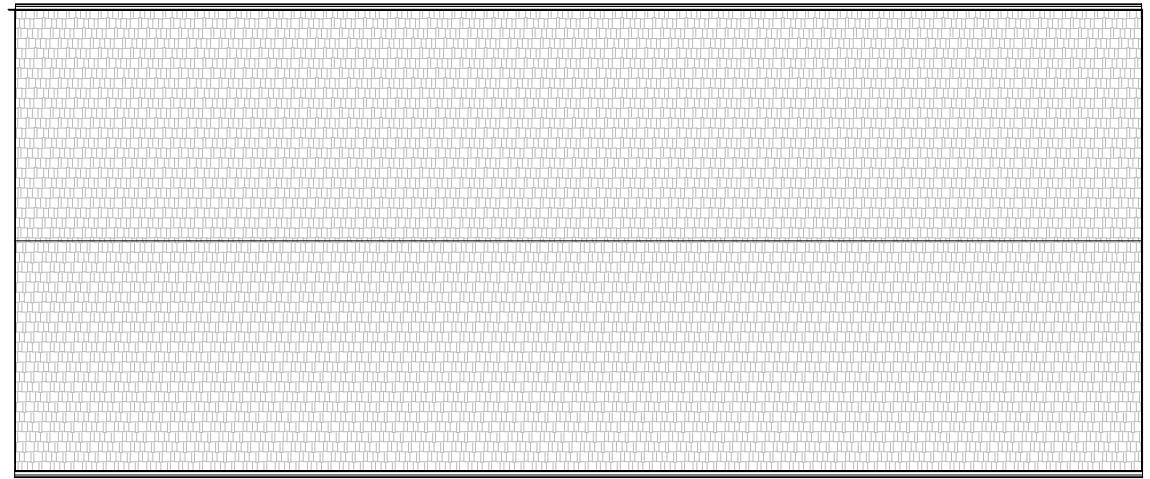
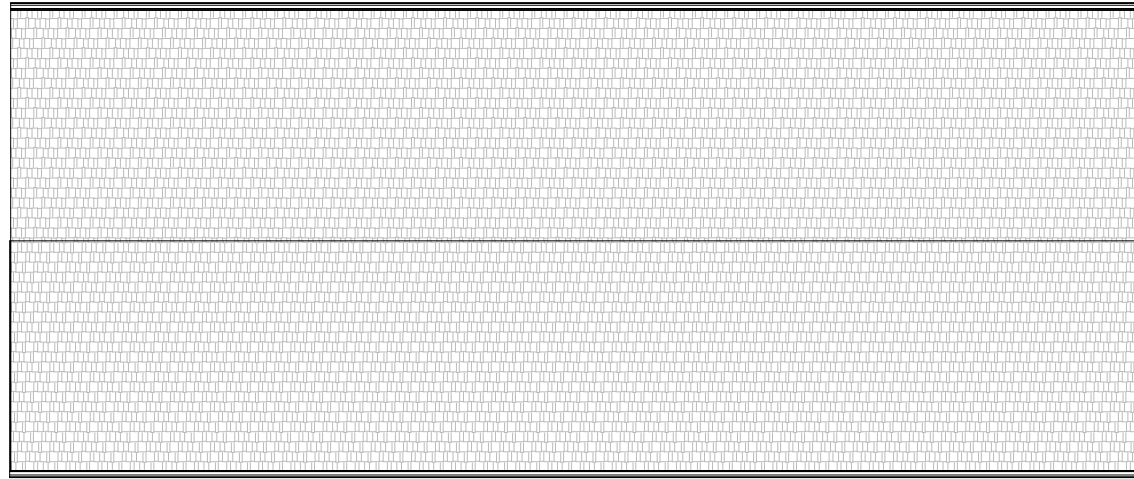
site plan
floor one



site plan
floor two



site plan
floor three



site plan
floor four



amenities

- Gated & garage parking
- Community courtyard
- Black & white en-suites
- Outdoor space
- NEZ tax abatement
- Nest thermostats
- 11' sliding terrace walls
- Wifi entry systems
- App control lighting
- Quartz countertops
- Rooftop terraces
- Black stainless appliances
- Wide-plank engineered oak flooring
- Close proximity to downtown
- Energy efficient HVAC systems
- Aluminum-clad Windsor Windows
 - with Low-E insulated glazing
- Eclipse european-style cabinetry
 - with wood drawers
- Blum hardware
- Skyline views
- Walkable neighborhood



corktown



restaurants

1. slows bbq
2. mercury burger & bar
3. bobcat bonnies
4. takoi
5. supergeil
6. cork & gabel
7. ottava via
8. mudgies deli
9. red dunn kitchen
10. ima
11. tacos el rodeo
12. the goblin sushi
13. xochimilco
14. michigan & trumbull pizza
15. mink
16. green dot stables

shopping

1. george gregory
2. eldorado
3. brooks lumber
4. honey bee market
5. metropolis cycles
6. spectacle society
7. corktown apothecary
8. detroit wick

nightlife

1. sugarhouse
2. two james
3. batch brewery
4. detroit axe
5. mcshanes irish pub
6. nemos bar
7. ufo factory
8. motor city wine
9. donovans pub
10. nancy whiskey
11. mgm grand casino
12. pj's lager house

cafes & bakeries

1. folk
2. james oliver
3. momento
4. lucky

parks & wellness

1. west riverfront park
2. detroit dog park
3. roosevelt park
4. plum health dpc
5. meta physica
6. godfrey hotel
7. the bearded lady
8. black the salon
9. detroit barber co.





The Coachman enjoys one of Detroit's most coveted locations offering a variety of restaurants, cafes and nightlife. With something for everyone, The Coachman is ideally located within blocks of shopping and the Detroit riverfront park. Offering a vibrant community and the prospect of future growth, Corktown is a neighborhood on the rise and perfect for young families and couples looking for a place that feels like home.

The Coachman celebrates the energy and location of Corktown.



team

developer

Altia

With more than ten years of experience in the greater Detroit area, Altia has established a track record of developing and rehabilitating living spaces with a focus on quality and value, deeply rooted in the local community. From single-family homes to large multifamily properties, Altia is building the future of Detroit.

exclusvie sales & marketing

James Tumey / O'Connor Real Estate & Development

A trusted and respected member of the community it serves, O'Connor specializes in both residential and commercial real estate, bringing almost 20 years of experience and expertise to the market. We are proud of the relationships we have built with our clients and the community along the way, never compromising our reputation or client-first approach. O'Connor's commercial division offers a full range of services, specializing in re-use; multifamily; restaurants, retail, office spaces and industrial.

James Tumey started in the real estate business in 2010 with a focus on marketing, sales, and branding new developments, Born and raised in Metro Detroit, and a resident of Corktown, James has an extensive design and photography background, and the knowledge he has developed through his years of real estate experience, he's able to present fresh ideas and exclusive opportunities to his clients.



