



NEIGHBORHOOD

MIDTOWN

LOCATION

SW CORNER OF CASS
AND SELDEN

SPACE TYPE

RETAIL / OFFICE

7,500 - 10,000-square-foot, two-story space is available for lease located on the prime corner of Cass Avenue and Selden Street. Ideal for a single-user looking for a flagship location, the building is comprised of 7,500 square feet on the ground level and 2,500 square feet on second-floor space. The building is located in the center of Midtown, which has the highest concentration of bars, eateries, and food halls, in addition to a tight concentration of ongoing new developments. The property is ideal for retailers looking to capitalize on a prime location and enjoy unparalleled exposure in the Detroit market.

ASKING RENT

Contact Broker

NEIGHBORS

Wayne State University, College for Creative Studies, Detroit Medical Center, Detroit Symphony Orchestra + The Max, Detroit Institute of Arts, Selden Standard, Selden, SheWolf, Mad Nice, Rocco's Italian Deli, Museum of Contemporary Art, Michigan Science Center, Museum of African American History, Detroit Public Library, Little Caesars Arena, Detroit Pistons Performance Center, Whole Foods Market, The Majestic Theatre

SIZE

7,500 - 10,000 SF

PARKING

Onsite

3745
CASS AVE
Midtown

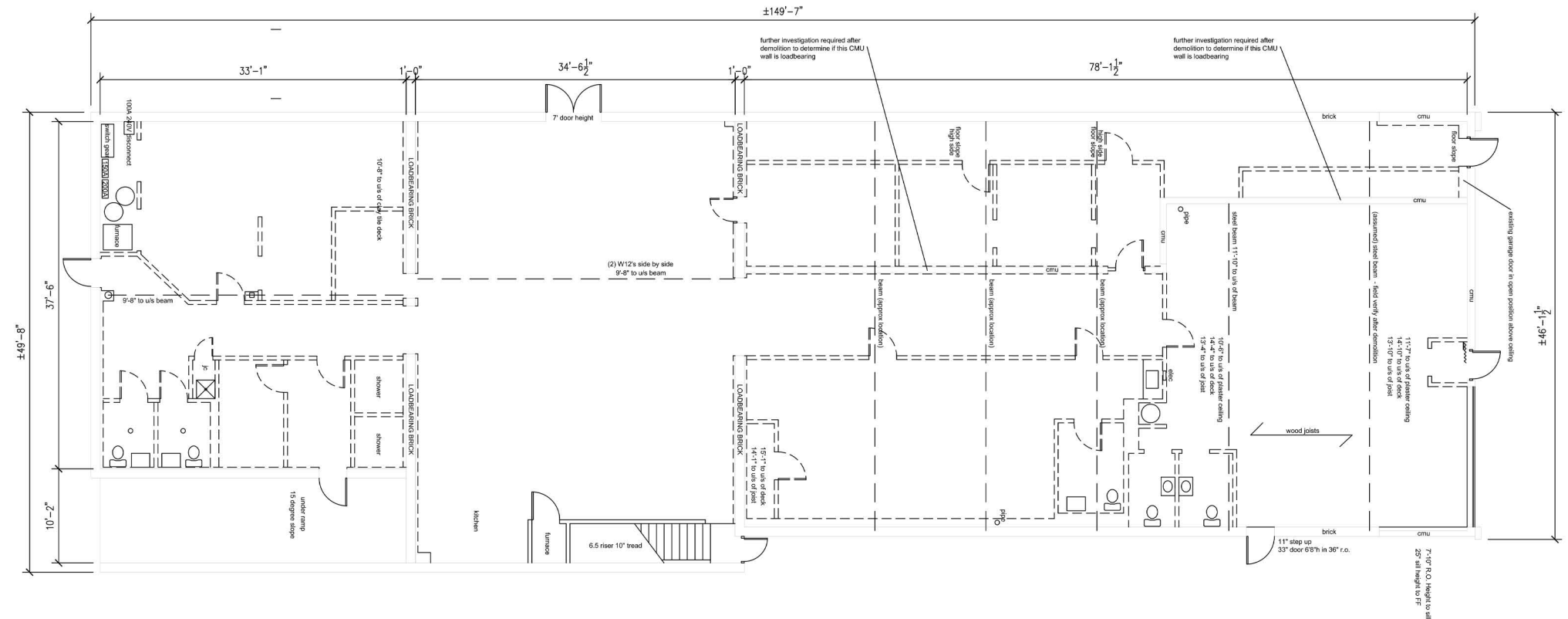
FEATURES

7,500 - 10,000
Square Feet

Prominent frontage along Cass Avenue

One of Detroit's most walkable areas

Onsite Parking







**3745
CASS**

10,000 RSF
Available

A TRUSTED AND RESPECTED
MEMBER OF THE COMMUNITY,
O'CONNOR REAL ESTATE
BRINGS 20 YEARS OF
EXPERIENCE AND EXPERTISE
TO THE COMMERCIAL OFFICE
AND RETAIL MARKET.

For more information about the space
available at 3745 Cass Ave,
please contact O'Connor Real Estate

Vincent Mazzola
+ 313 704 2678
vincent@oconnordetroit.com

Melissa Price
+ 313 421 1557
melissa@oconnordetroit.com

O'Connor Real Estate

The information used in this marketing material was taken from sources believed to be reliable. O'Connor Real Estate makes no representation, warranty, or endorsement made as to the accuracy, reliability, adequacy, or completeness of any information or analysis contained herein and disclaims any and all liability that may be based on such information, errors therein or omissions therefrom. You and your advisors should conduct a careful and independent investigation of the property to determine your satisfaction with the suitability of the property for your needs.