

1514 WASHINGTON

oconnordetroit.com/1514 Washington



NEIGHBORHOOD

DOWNTOWN

LOCATION

**NE CORNER OF WASHINGTON
AND CLIFFORD**

SPACE TYPE

OFFICE

5,000 SF of furnished office space available. Located in a densely populated core CBD area with a mixture of office, multifamily, entertainment, shopping, and sporting venues all within walking distance. The Claridge House sits on the northeast corner of Washington Boulevard and Clifford Avenue adjacent to Grand Circus Park. The property sits along a streetscape area with a small brick-walk pedestrian park that provides access to the neighborhood and the nearby Grand Circus Park people mover station. Spaces features: hardwood floors, exposed ceilings, and lots of natural light.

ASKING RENT

\$12.00 PER RSF MODIFIED GROSS

SIZE

5,000 RSF

1514

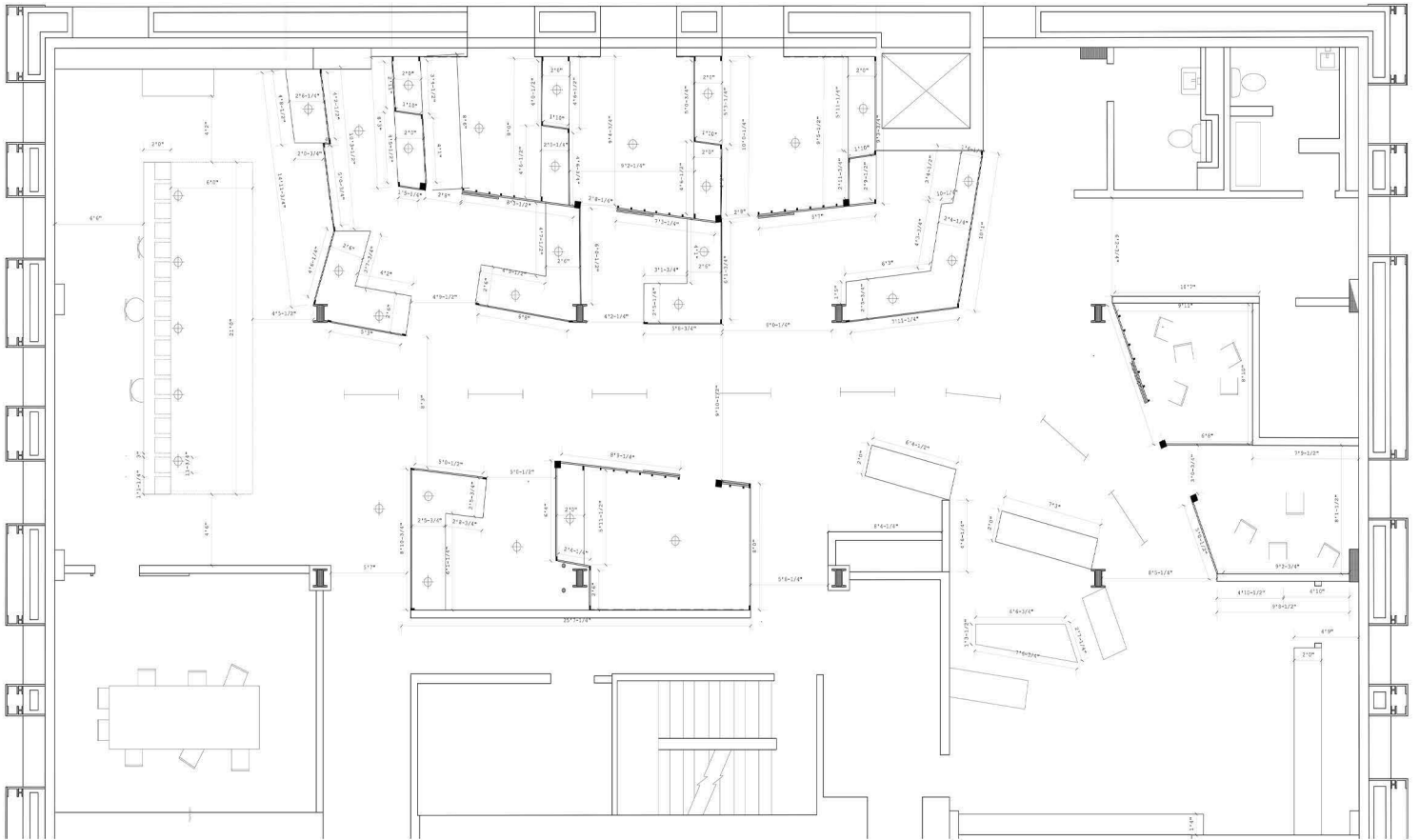
WASHINGTON BLVD

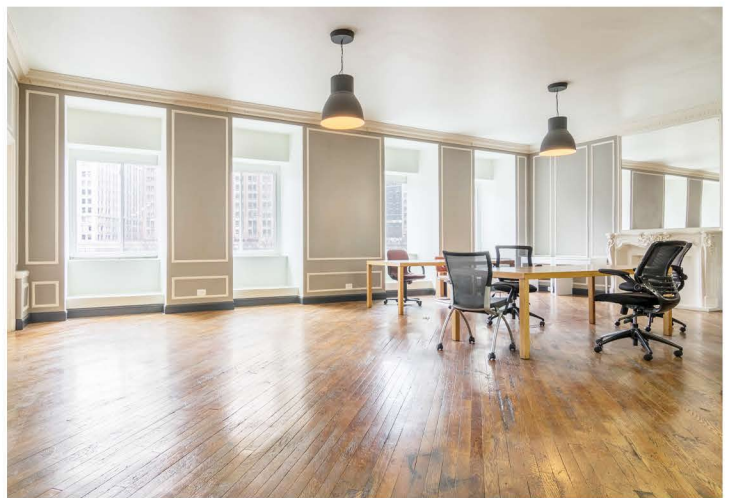
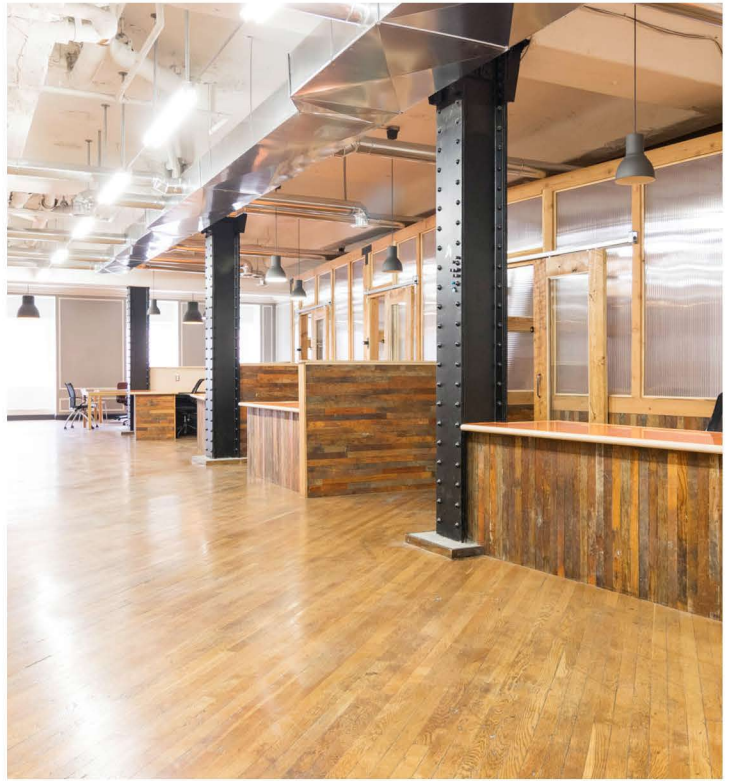
Downtown

FEATURES

5,000 Square Feet

Turnkey Office Space







**1514
Washington
Blvd**

5,000 SF Available

A TRUSTED AND RESPECTED MEMBER OF THE COMMUNITY, O'CONNOR REAL ESTATE BRINGS 20 YEARS OF EXPERIENCE AND EXPERTISE TO THE COMMERCIAL OFFICE AND RETAIL MARKET.

For more information about the office space
available at 1514 Washington Blvd,
please contact O'Connor Real Estate

Vincent Mazzola

+ 313 704 2678

vincent@oconnordetroit.com

Melissa Price

+ 313 421 1557

melissa@oconnordetroit.com

O'Connor Real Estate

The information used in this marketing material was taken from sources believed to be reliable. O'Connor Real Estate makes no representation, warranty, or endorsement made as to the accuracy, reliability, adequacy, or completeness of any information or analysis contained herein and disclaims any and all liability that may be based on such information, errors therein or omissions therefrom. You and your advisors should conduct a careful and independent investigation of the property to determine your satisfaction with the suitability of the property for your needs.