



NEIGHBORHOOD

**CORKTOWN**

LOCATION

**BROOKLYN ST BETWEEN PORTER  
AND LABROSSE**

SPACE TYPE

**OFFICE**



Located in the heart of Corktown, the Kaul Glove building offers panoramic skyline views from Michigan Central Station to Downtown Detroit. This four-story creative office building has 4,332-square-foot floor plates ideal for a single-floor tenant or multi-floor tenant. Parking is available in the adjacent lot and non-metered street parking.

ASKING RENT

Starting at \$26/RSF

SIZE

4,092 - 16,370 SF

NEIGHBORS

Michigan Central Station, Ford Motor Company, Mudgie's, Batch Brewery, James Oliver Coffee, The Godfrey Hotel, George Gregory, Corktown Apothecary, Ottawa Via, Nemo's, Alpino, Folk, Meta Physica Wellness Center, Momentum Gelato, Rocket Data Center, Level 3 Communications, Southwest Greenway, Slows, New Lab Michigan Central, Detroit Bus Company, IMA, Metropolis Cycles, Mercury Burger Bar.

CEILING HEIGHTS

10'

# Kaul

## GLOVE BUILDING

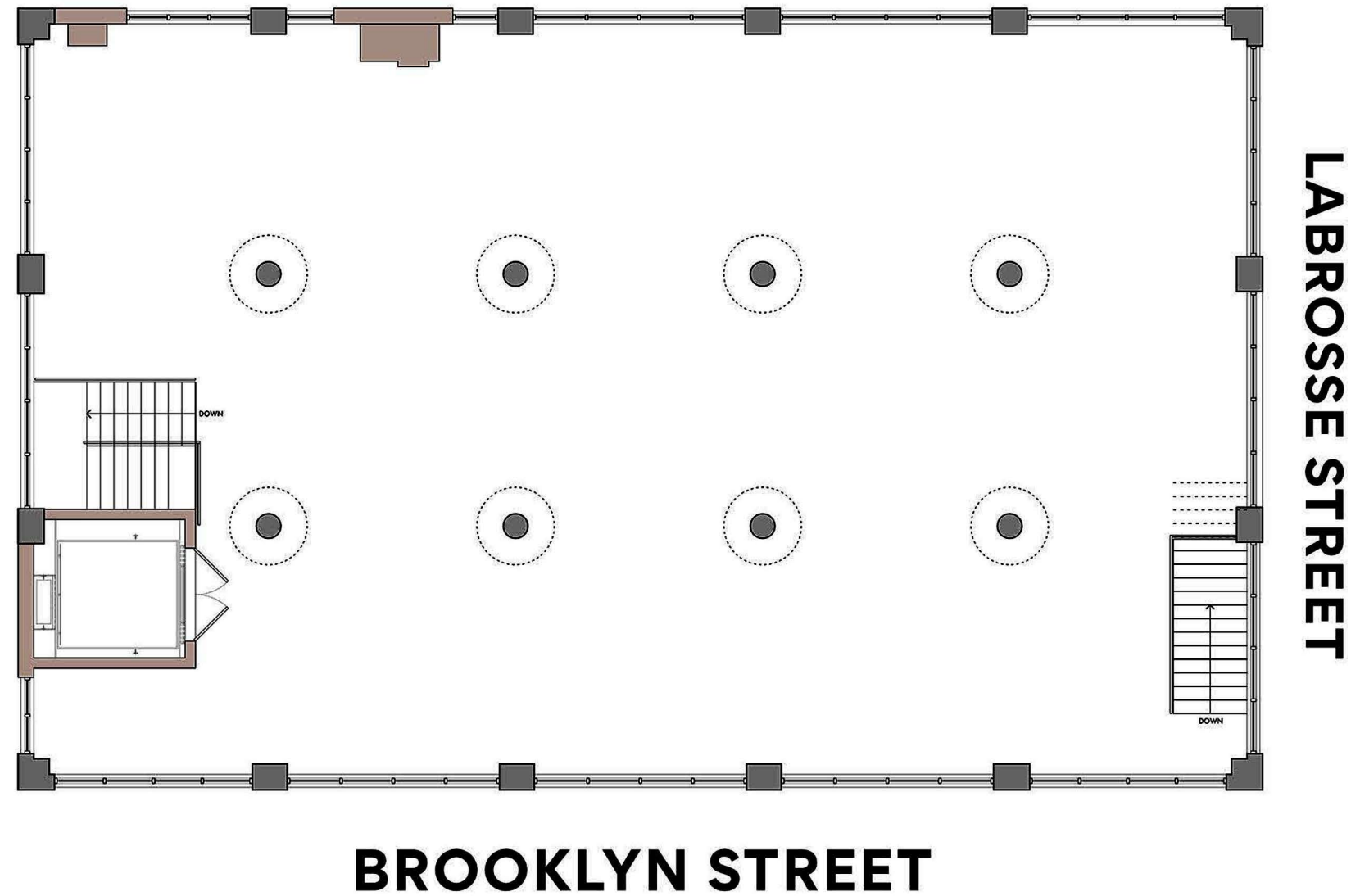
Corktown

### FEATURES

4,092 Square Feet  
Floor Plates

Panoramic Skyline  
View

Turn Key Spaces  
with Kitchenette  
& Toilet Rooms











**Kaul  
Glove Building**  
20,000  
RSF Available



A TRUSTED AND RESPECTED  
MEMBER OF THE COMMUNITY,  
O'CONNOR REAL ESTATE  
BRINGS 20 YEARS OF  
EXPERIENCE AND EXPERTISE  
TO THE COMMERCIAL OFFICE  
AND RETAIL MARKET.

For more information about the office spaces  
available at 1441 Brooklyn,  
please contact O'Connor Real Estate

**Vincent Mazzola**  
**+ 313 704 2678**  
**[vincent@oconnordetroit.com](mailto:vincent@oconnordetroit.com)**

**O'Connor** Real Estate

The information used in this marketing material was taken from sources believed to be reliable. O'Connor Real Estate makes no representation, warranty, or endorsement made as to the accuracy, reliability, adequacy, or completeness of any information or analysis contained herein and disclaims any and all liability that may be based on such information, errors therein or omissions therefrom. You and your advisors should conduct a careful and independent investigation of the property to determine your satisfaction with the suitability of the property for your needs.